

Working Group 1

Waterway Infrastructure & Management

Bucharest, 27 October 2011

Thomas Hartl

via donau – Österreichische Wasserstraßen-Gesellschaft mbH

The Danube as a TEN-T waterway

- Priority Project No. 18 of the trans-European transport network
- New TEN-T Core Network Corridor No. 10 "Strasbourg – Danube"

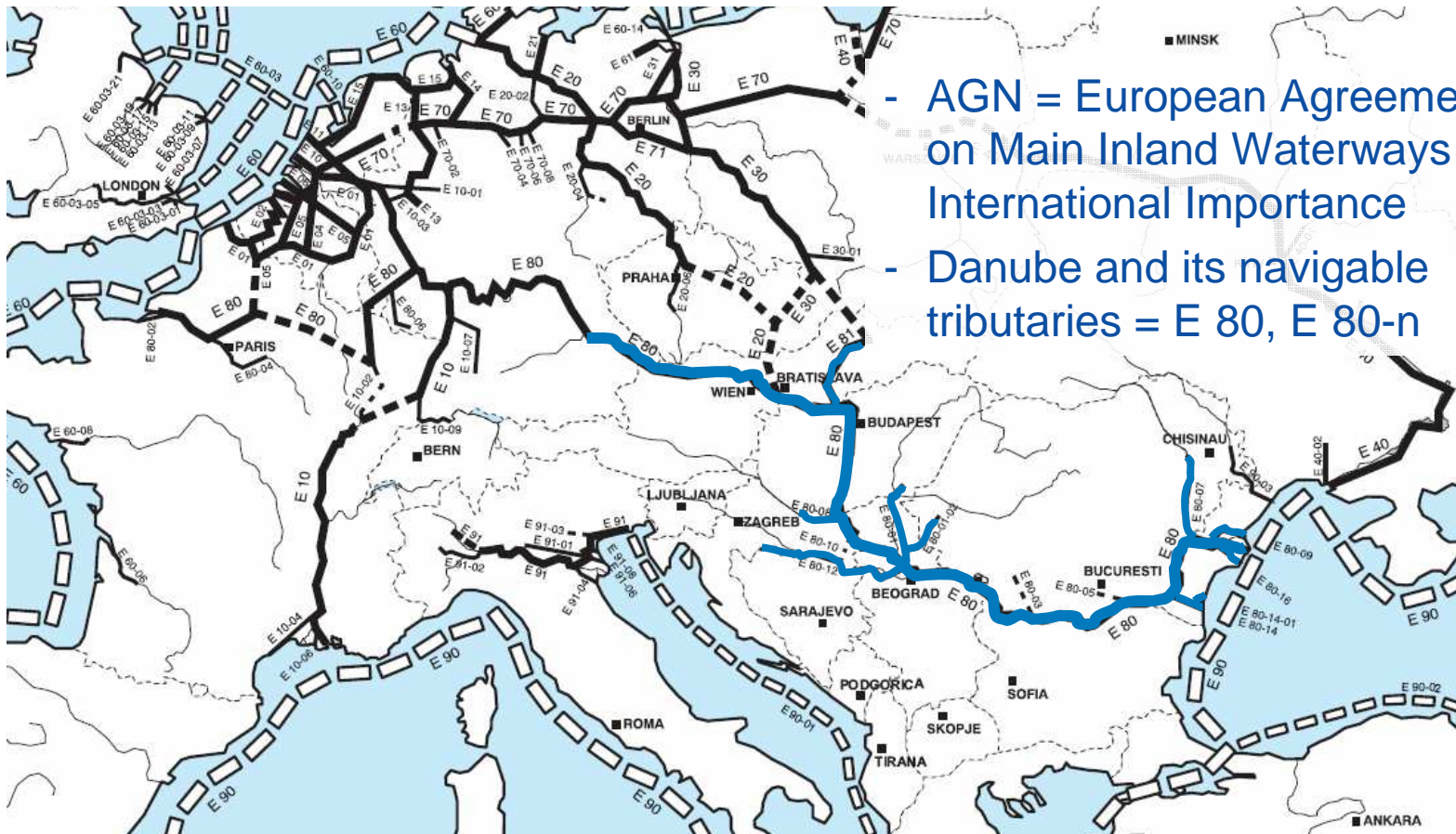


EU Strategy for the Danube Region

Priority Area 1a – To improve mobility and multimodality: Inland waterways



The Danube as part of the AGN



- AGN = European Agreement on Main Inland Waterways of International Importance
- Danube and its navigable tributaries = E 80, E 80-n

EUSDR actions and targets

Three **actions** aimed at the improvement of waterway infrastructure and management in the Danube region are included in the EUSDR Action Plan:

- To complete the implementation of TEN-T Priority Project 18 on time and in an environmentally sustainable way.
- To invest in waterway infrastructure of the Danube and its tributaries and develop the interconnections.
- To improve comprehensive waterway management of the Danube and its tributaries.

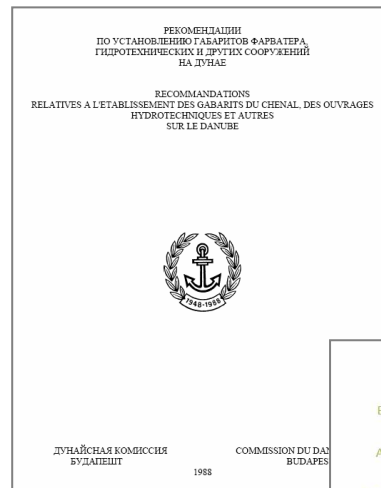
→ One **final target**:

- Solve obstacles to navigability, taking into account the specific characteristics of each section of the Danube and its navigable tributaries and establish effective waterway infrastructure management by 2015.

Regulatory framework

Danube Commission

- Recommendations on the parameters of waterway infrastructure (fairway, locks, bridges, etc.)
- 10 Danube riparian states; Danube from Kelheim to Sulina

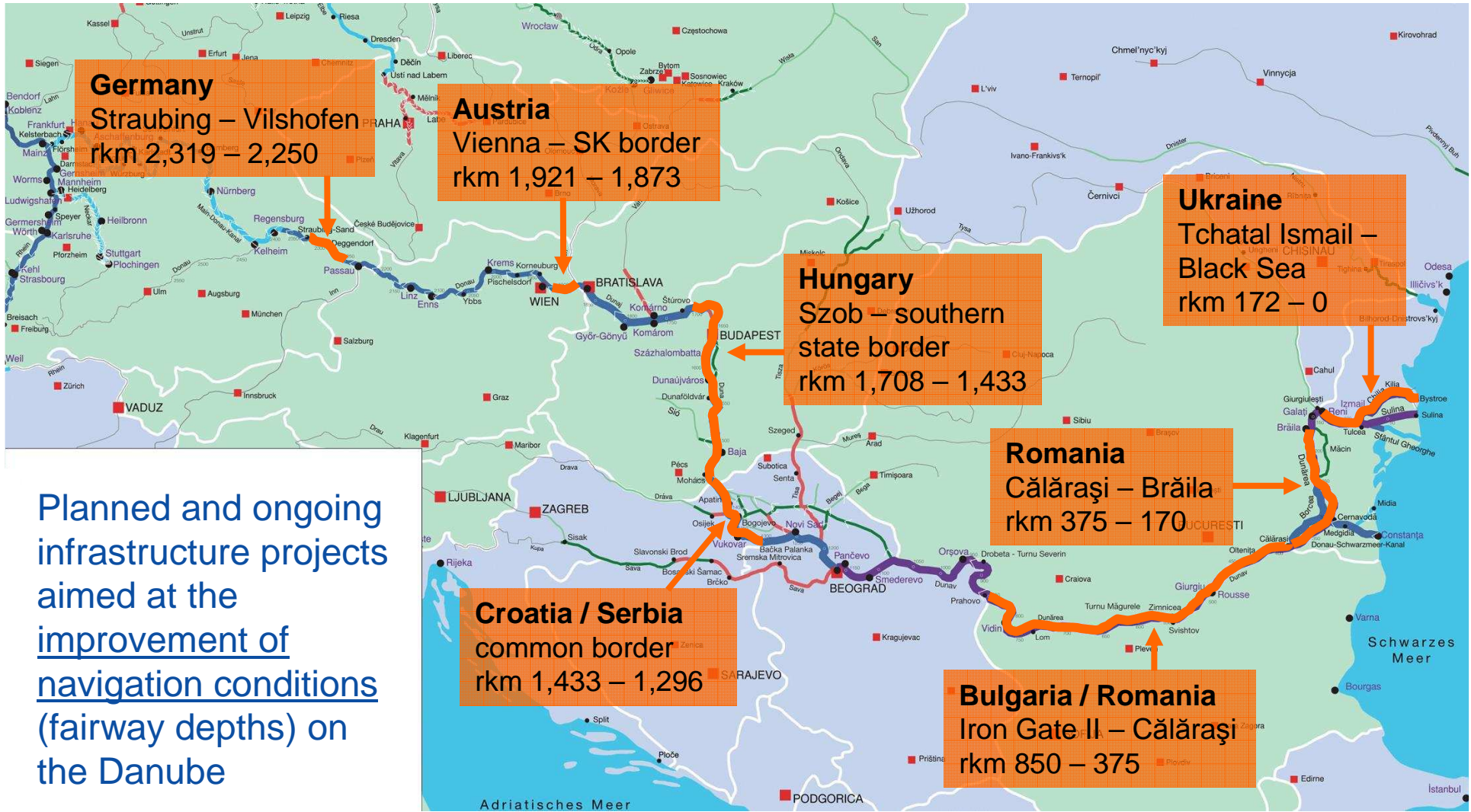


United Nations Economic Commission for Europe (UNECE)

- Agreement on Main Inland Waterways (AGN) is binding under international law
- 17 contracting parties, including 8 out of 10 Danube riparian states (excl. Germany and Serbia); Danube and tributaries

EU Strategy for the Danube Region

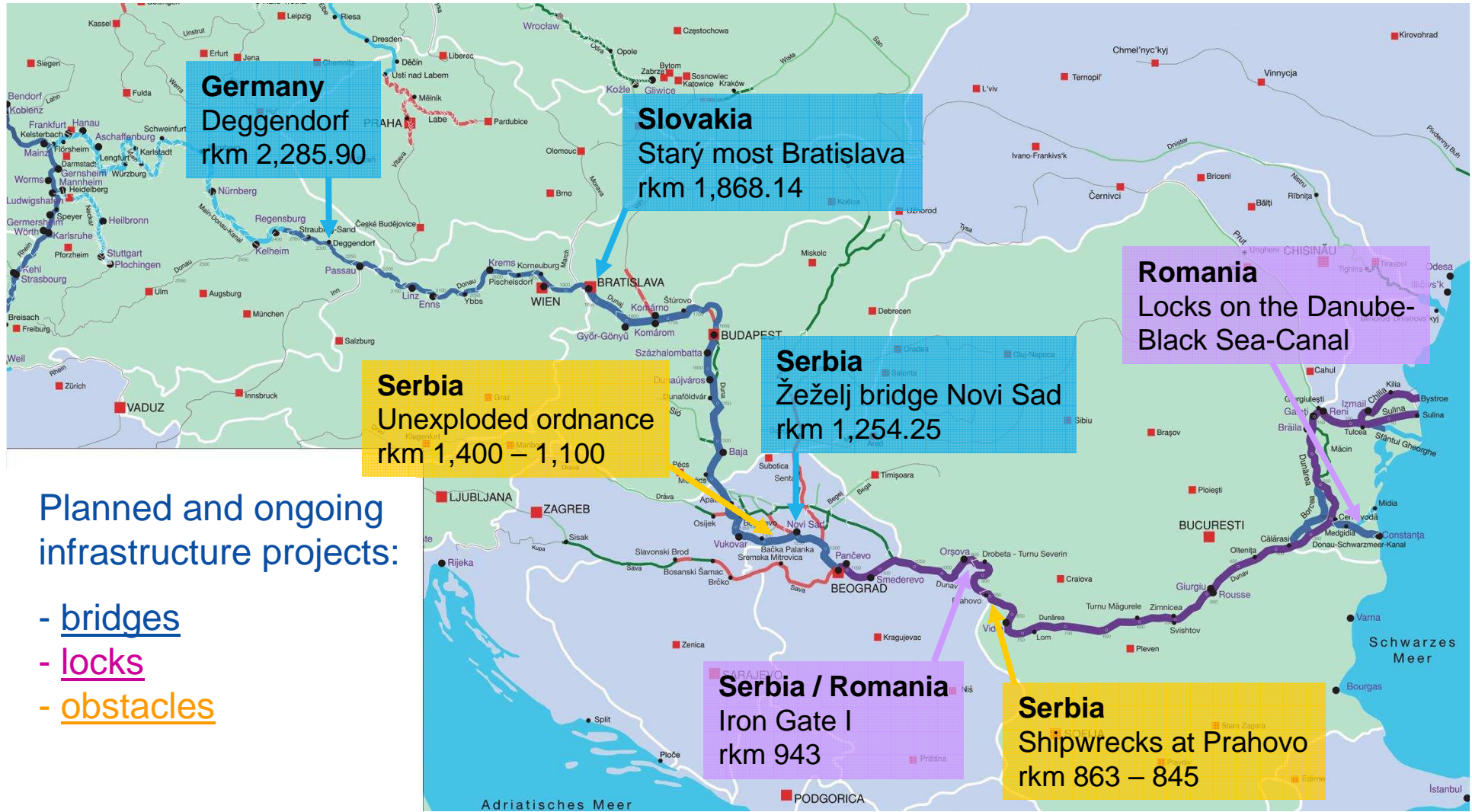
Priority Area 1a – To improve mobility and multimodality: Inland waterways



Planned and ongoing infrastructure projects aimed at the improvement of navigation conditions (fairway depths) on the Danube

EU Strategy for the Danube Region

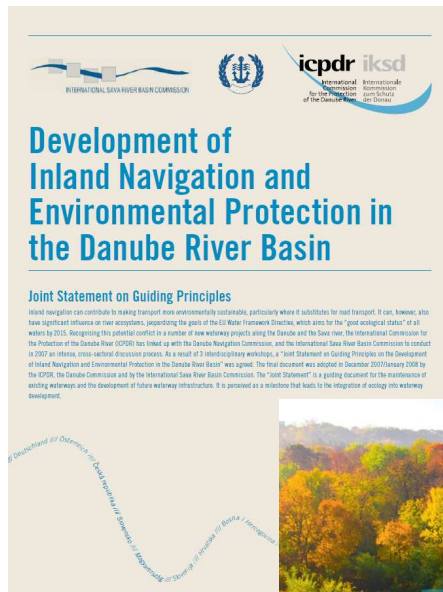
Priority Area 1a – To improve mobility and multimodality: Inland waterways



Planned and ongoing infrastructure projects:

- bridges
- locks
- obstacles

Integrative waterway planning



- Joint understanding on the future infrastructure development of the Danube waterway
- Definition of integrative planning principles, involving all relevant experts (ecology, economy, navigation, river engineering)



- Concrete instructions for action for the implementation of integrative planning principles with regard to waterway infrastructure projects
- Information on existing good practices

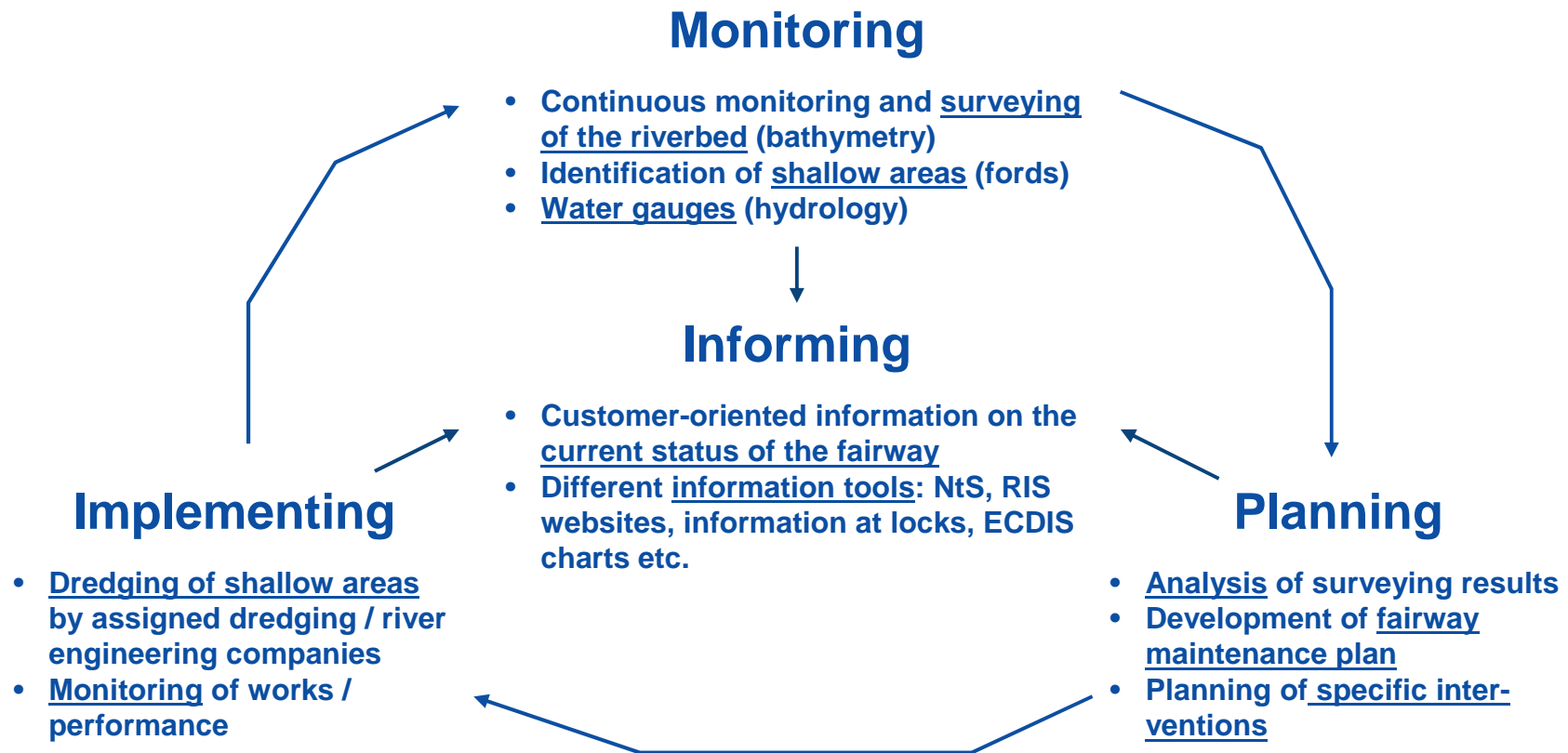
Areas of waterway management

(1)
Surveying

(2)
Maintenance

(3)
Information

Fairway maintenance cycle



Example of project: NEWADA

Network of Danube Waterway Administrations (04/2009 – 03/2012)

- Partners: waterway authorities/administrations along the Danube
- Observers: ICPDR, Danube & Sava Comm., Ministries of Transport
- Co-financed by the EU's SEE Transnational Cooperation Programme
- Primary targets with focus on waterway infrastructure:
 - Development of the Danube waterway by means of a better coordination and cooperation of waterway authorities/administrations
 - Optimisation of activities regarding hydrography, hydrology and waterway maintenance (methods, processes, ecological aspects)
 - Establishment of an Internet platform for up-to-date fairway information featuring information from all Danube riparian states ("FIS Portal")

EU Strategy for the Danube Region

Priority Area 1a – To improve mobility and multimodality: Inland waterways



Mag. Thomas Hartl, MAS

Senior Expert | Infrastructure Development

Technical Secretariat for Priority Area 1a of the EUSDR
via donau – Österreichische Wasserstraßen-Gesellschaft mbH

A-1220 Vienna, Donau-City-Strasse 1

Phone +43 5 04321-1603 | Fax +43 5 04321-1050

thomas.hartl@via-donau.org | www.via-donau.org