

EU Strategy for the Danube Region

Priority Area 1a – To improve mobility and multimodality: Inland waterways



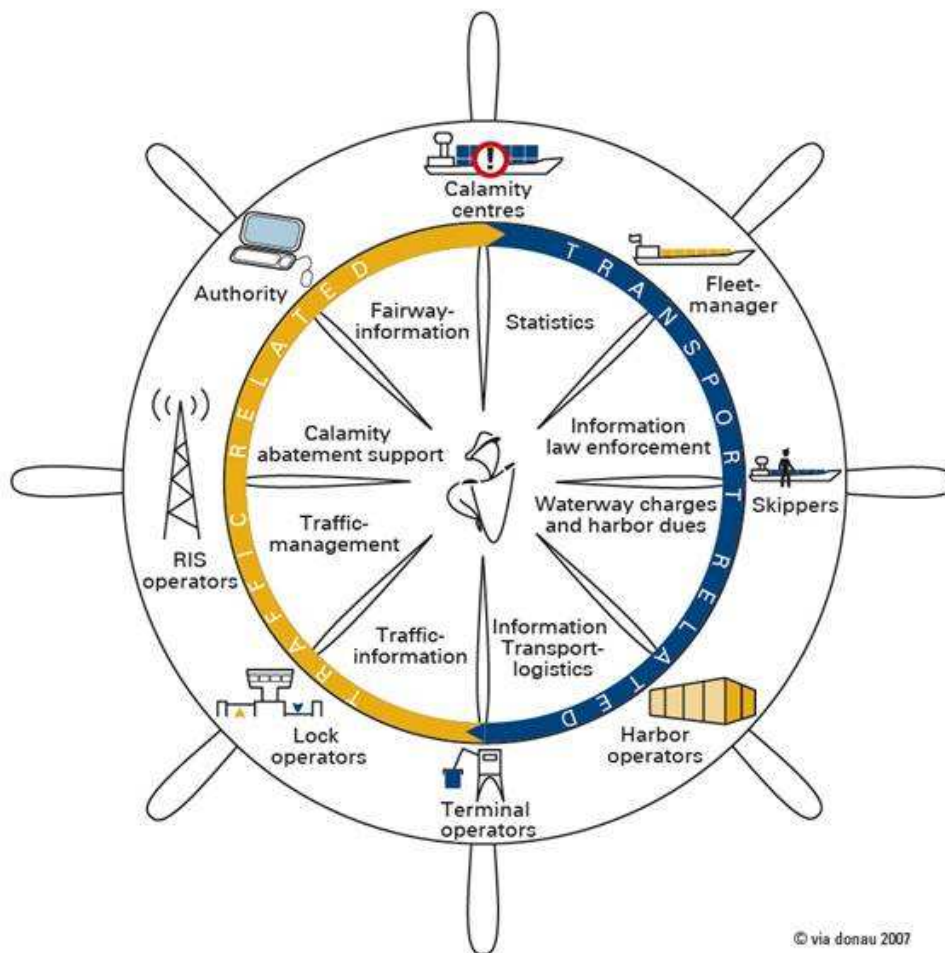
Working Group 4 River Information Services

Bucharest, 27 October 2011

Reinhard Vorderwinkler

Austrian Federal Ministry for Transport, Innovation and Technology

Users and functions of RIS



Traffic related services

- ➔ Fairway information
- ➔ Traffic information
- ➔ Traffic management
- ➔ Calamity abatement

Transport related services

- ➔ Cargo & fleet management
- ➔ Waterway charges and harbour dues
- ➔ Information for law enforcement
- ➔ Statistics

Main functions of RIS

- Provide information about waterway infrastructure
 - I-ENCs (geography, fairway, traffic regulation)
 - Hydrological data (water level + forecasts)
 - Notices-to-Skippers (restrictions/limitations)
- Provide information about traffic
 - Traffic monitoring (T&T of vessels + access)
 - Traffic management (lock management)
 - Calamity management (historic T&T + cargo data)
- Provide information about voyages and cargo
 - Electronic cargo reporting (cargo + passenger data)
 - Voyage planning (ETA, deviation management)

Key RIS technologies

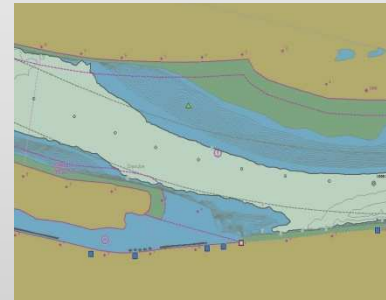
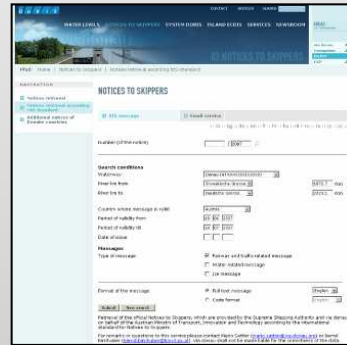
Traffic Information

Fairway information

Geographic information

Cargo and voyage information

International RIS data exchange



| Vessel name | Vessel ID | Length [m] | Width [m] | Max. Draught [m] | Max. Tonnage [t] | Height [m] | Draught |
|-------------|------------|------------|-----------|------------------|------------------|------------|---------|
| ATVESSEL01 | EN10200001 | 100 | 100 | 100 | 1000 | | 8440 |

| Vessel name | Loading place | Discharge place | Class | Number | Cargo Name | Weight [t] |
|-------------|---------------------------------------|-------------------------------|-------|--------|------------|------------|
| ATVESSEL01 | VIENNA FRUEGENAU-PORT FRUEGENAU | BRATISLAVA-BRATISLAVA PORT | ADN | 114 | BENZENE | 800 |

AIS

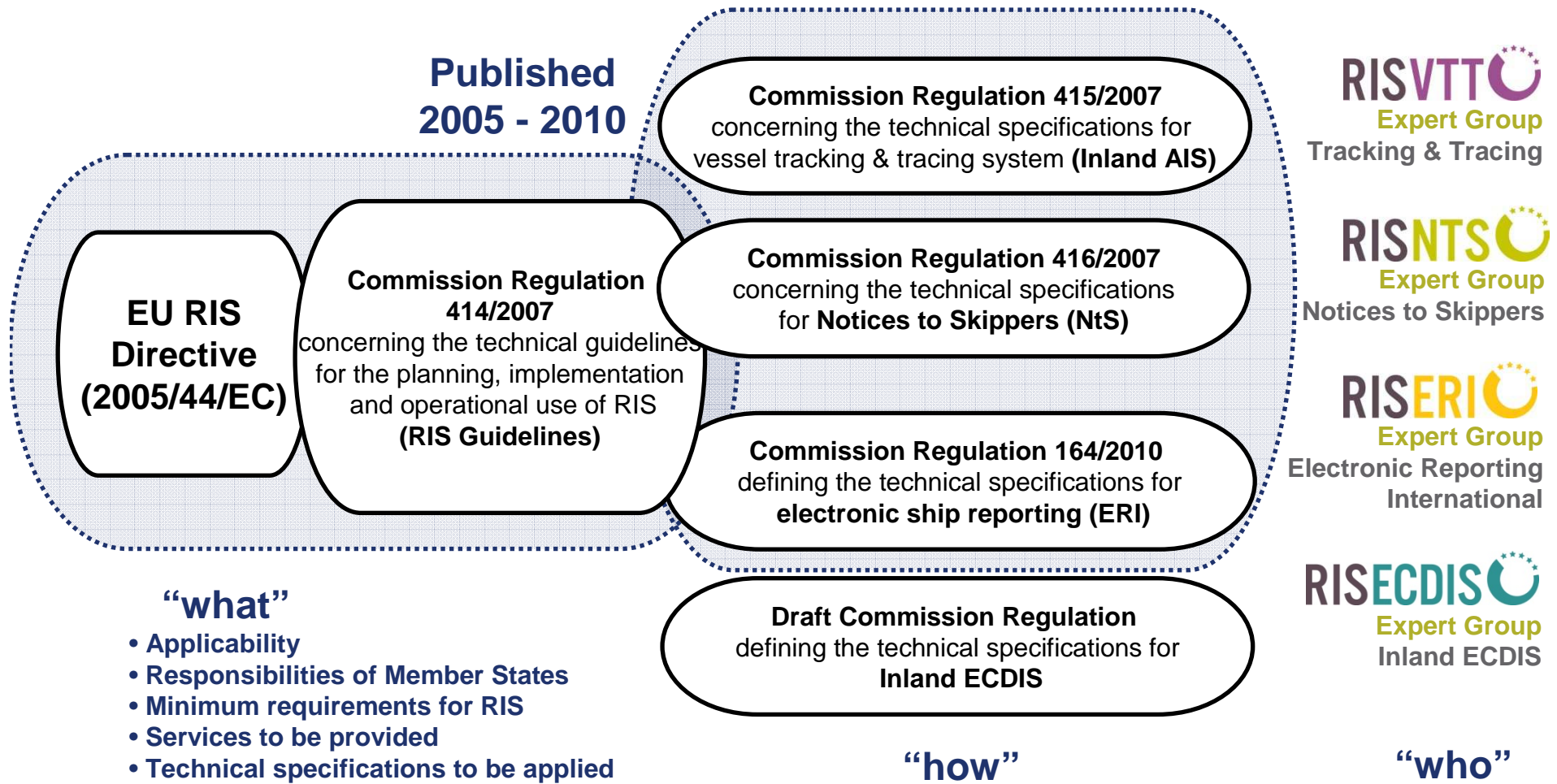
Notices-to-Skippers

IENC

Electronic reporting

RIS Index (waterway network reference data)

European legal & technical provisions



Status of agreements for international RIS data exchange

| | „SAP-Solution“ | Letter exchange for EHDB | Service Agreement for EHDB | Service Agreement for Traffic Mgmt. |
|-----------------------------|-------------------------------|-------------------------------------|-----------------------------------|-------------------------------------|
| Data | ERI, VTT, Hull data | Hull data | Hull data | VTT in border areas, ERI |
| Users | RIS Authorities and logistics | Certification and RIS authorities** | Certification and RIS authorities | RIS Authorities |
| Status | in force until 31.12.2011 | in force for 2 countries | in force for 7 countries | under finalization |
| Valid after 1.1.2012 | No | No | Yes* | Yes |

→ Gap: data exchange with logistics after 1.1.2012

EU Strategy for the Danube Region

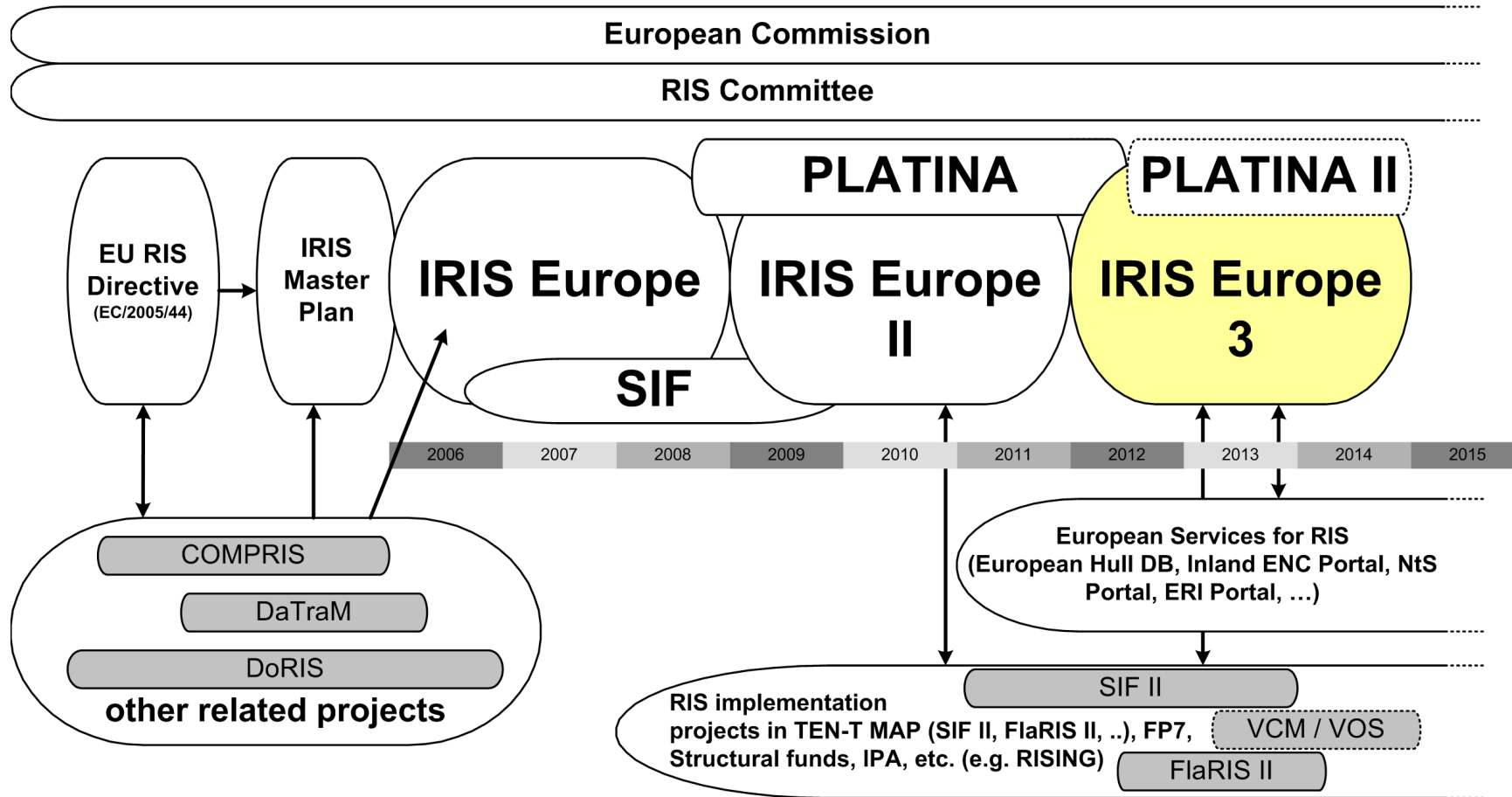
Priority Area 1a – To improve mobility and multimodality: Inland waterways



RIS Implementation in the Danube Region



RIS implementation approach



Implementation of Services on the Danube

- Inland ENCs available in all countries
- Tracking & Tracing infrastructures in (pilot) operation in most countries, most vessels equipped in 12/2012, carriage requirements in force in several countries
- Notices to Skippers and Electronic Reporting Systems in (pilot) operation in nearly all countries
- Data exchange infrastructures available in most countries
- Special attention required for legal issues related to data exchange, services for logistics users and the preparation of national RIS Indices
- Ongoing projects for the completion of RIS implementation in BG, RO and RS, IRIS Europe 3 ensures harmonised service development
- Full service coverage expected 2013

EU Strategy for the Danube Region

Priority Area 1a – To improve mobility and multimodality: Inland waterways

