



EU Danube Region Strategy: Technical Secretariat for Priority Area 1a:  
To improve mobility and multimodality: Inland waterways

**2<sup>nd</sup> meeting of the Steering Group**

# Serbian IWT Policy

- Towards a Smoother Navigation on the Danube River-

Directorate for Inland Waterways  
Bucharest, 28-10-2011

International IWW Network in Serbia

Directorate for Inland Waterways

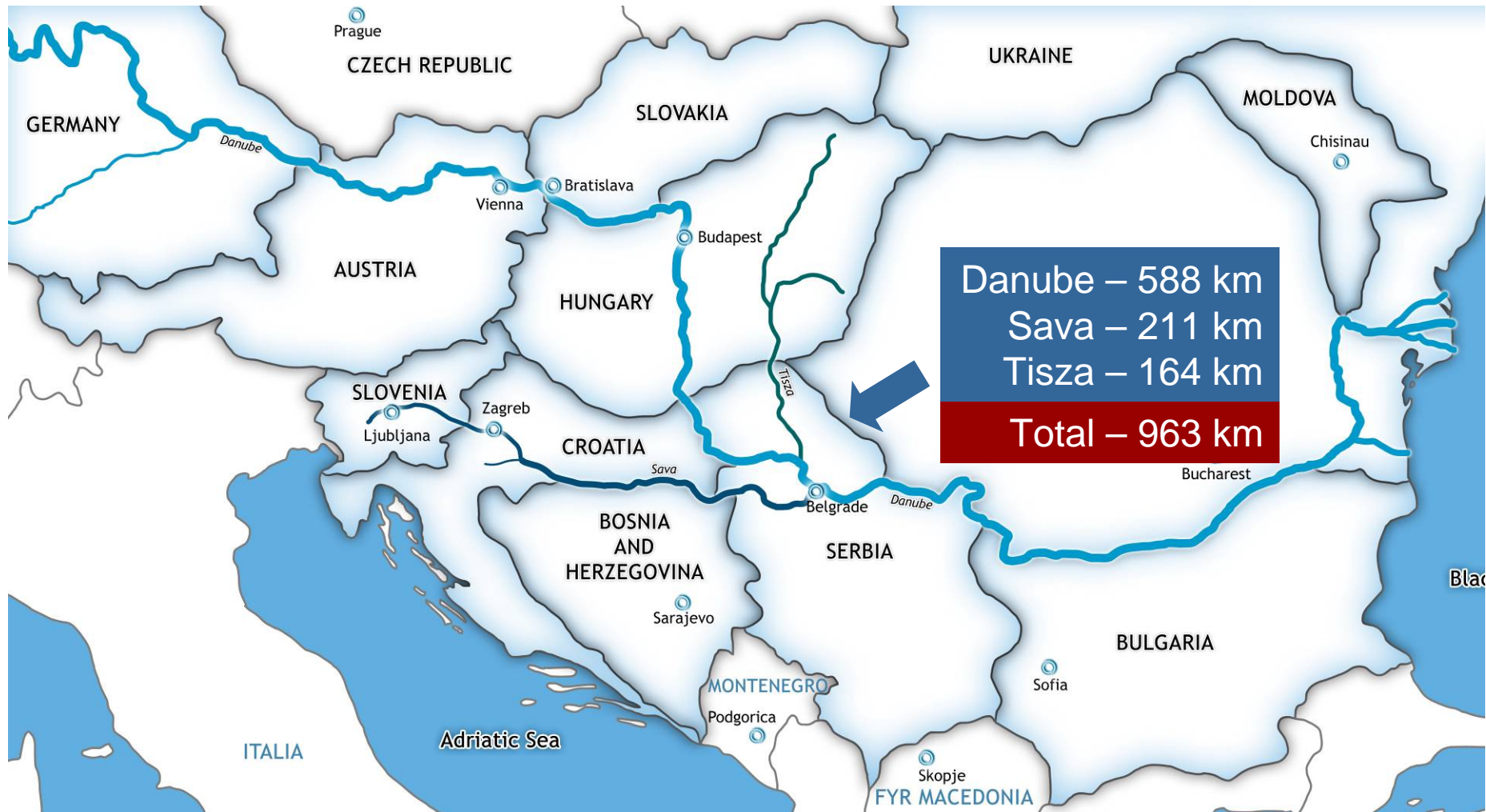
Strategic Framework

EU Strategy for the Danube Region

EU Funded Projects – Strategic Partnerships

Challenges Ahead

# International IWW Network in Serbia



# Directorate for Inland Waterways

- Directorate for Inland Waterways is a **special organization of the Government of the Republic of Serbia**
- Responsible for the **Danube, Sava, and Tisza Rivers**



# Directorate for Inland Waterways

- Our mission is to provide **efficient, sustainable, standardized and environmentally friendly** system of inland waterways which will be used by businesses and general public **at local and international scale**



# Strategic Framework

- Master Plan for IWW Transport in Serbia (2006)
- Serbian Transport Development Strategy for the Period 2008-2015 (2007)
- General Master Plan for Transport in Serbia (2009)
- **EU Strategy for the Danube Region (2010)**

Priority projects identified





# EU Funded Projects – Strategic Partnerships

Instrument for Pre-Accession Assistance (IPA)



**Rising**  
River Information Services for Transport & Logistics

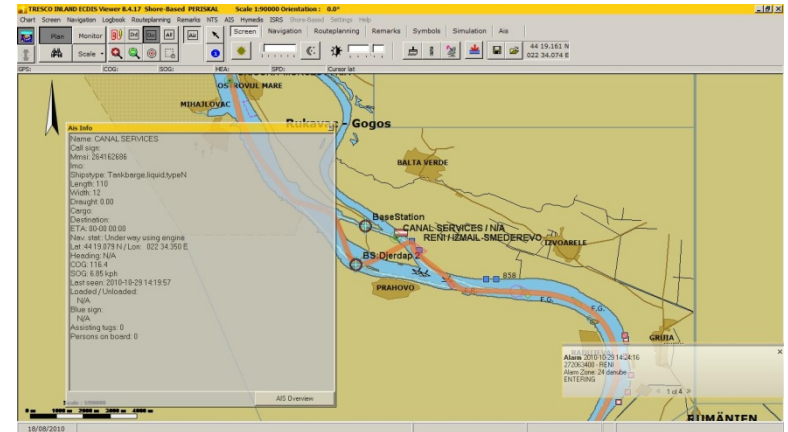


**Sharing a  
common  
vision with  
our strategic  
partners**



# Project 1: Implementation of RIS in Serbia

- EU Funding programme: IPA 2007
- EU funding rate: 100%
- Value: EUR 10.5 Mill
- Timeframe: 2009-2012
- Objective: Improve navigation safety
- Measure: Introduce information and communication technologies





# Project 1: Implementation of RIS in Serbia

- Who is using RIS in Serbia today:
  - Directorate for Inland Waterways
  - Ministry of Infrastructure and Energetic – Captaincies
  - Lock operators at Iron Gate 1 and Iron Gate 2
  - Serbian Customs Office
  - Ministry of agriculture, forestry and water management
  - Ministry of Interior - Border Police, Gendarmerie, Sector for Emergency Situations (Fire brigade)
  - Private shipping companies, ports



# Project 2: Documentation for River Training Works

- EU Funding programme: IPA 2010
- EU funding rate: 100%
- Value: EUR 1.85 Mill
- Timeframe: 2011-2013
- Objective: **Improve navigation safety**
- Measure: **Remove navigation bottlenecks**



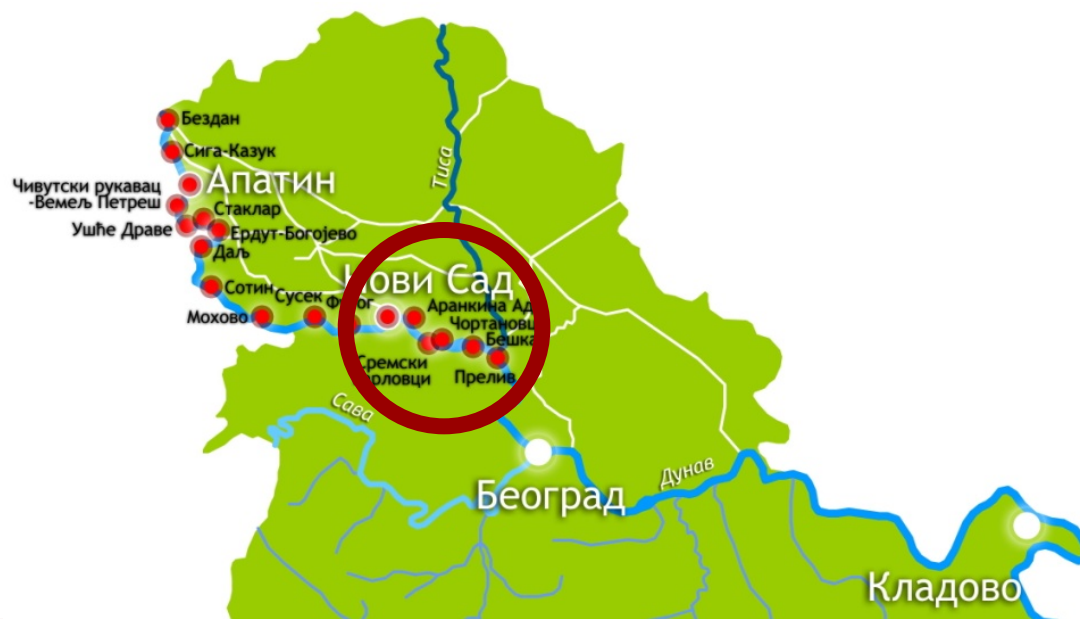
# Project 2: Documentation for River Training Works

- Preparation of conceptual designs for all critical sections
- Preparation of main designs and tender documentation for **5 critical sections**



# Project 2 follow up: Execution of Works

- EU Funding programme:  
IPA 2012-2013  
(Operational Programme  
for Economic  
Development)
- EU funding rate: 85%
- Value: EUR 12 Mill
- Timeframe: 2013-2016
- **Continue** with  
preparation of main  
designs and tender  
documentations, and  
execution of works





## Project 3: NEWADA

- Project: Network of Danube Waterway Administrations
- EU Funding programme: SEE
- EU funding rate: 85%
- Total value: EUR 2.8 Mill
- Timeframe: 2009-2012
- Number of partners: 12
- Number of countries: 8
- Objective: **Improve navigation safety**
- Measure: **Improve cooperation between Danube administrations**



**NEWADA**

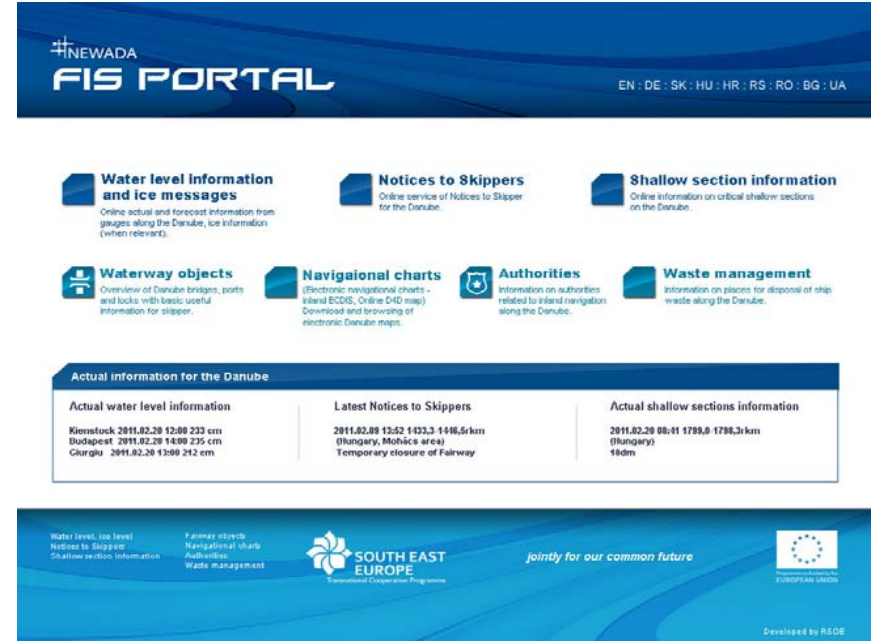
- **Fields of cooperation:**

- Hydrography
- Hydrology
- IWW maintenance
- ICT

- **Results:**

- Strategic documents for cross-border cooperation
- FIS portal
- ENC harmonization
- WLAN network

**Follow up project prepared (2012-2014)**



The screenshot shows the NEWADA FIS PORTAL website. At the top, it says "NEWADA FIS PORTAL" and lists languages: EN : DE : SK : HU : HR : RS : RO : BG : UA. Below this are several service tiles:

- Water level information and ice messages**: Online actual and forecast information from gauges along the Danube, ice information (when relevant).
- Notices to Skippers**: Online service of Notices to Skipper for the Danube.
- Shallow section information**: Online information on critical shallow sections on the Danube.
- Waterway objects**: Overview of Danube bridges, ports and locks with basic useful information for skipper.
- Navigational charts**: (Electronic navigational charts - inland ECDIS, Online D-D map) Download and browsing of electronic Danube maps.
- Authorities**: Information on authorities related to inland navigation along the Danube.
- Waste management**: Information on places for disposal of ship waste along the Danube.

Below these tiles is a section titled "Actual information for the Danube" with three columns:

Actual water level information	Latest Notices to Skippers	Actual shallow sections information
<b>Kienmlock</b> 2011.02.20 12:00 233 cm <b>Budapest</b> 2011.02.20 14:00 235 cm <b>Giurgiu</b> 2011.02.20 13:00 212 cm	<b>2011.02.20 13:52 1433,3 1446,6 km</b> (Hungary, Mohece area) Temporary closure of Fairway	<b>2011.02.20 06:41 1799,8 1798,3 km</b> (Hungary) 18dm

At the bottom of the screenshot, there is a footer with logos for "SOUTH EAST EUROPE Transnational Cooperation Programme", the European Union flag, and the text "jointly for our common future". It also says "Developed by R&OE".



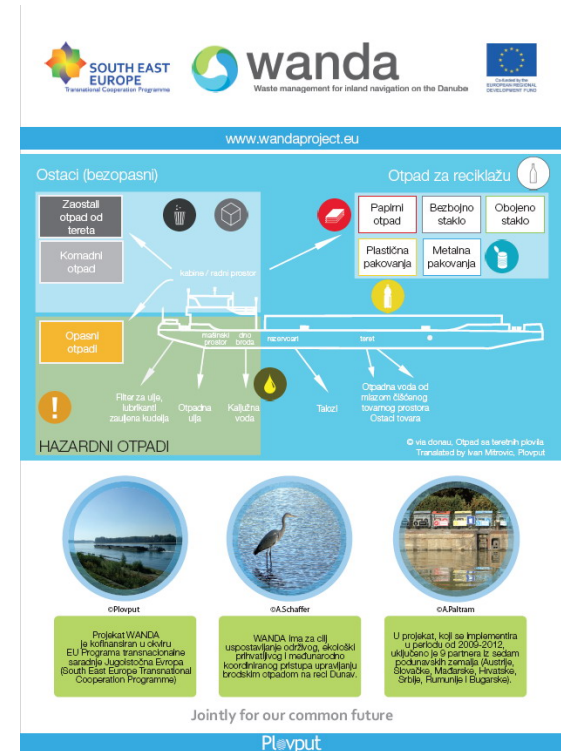
The NEWADA logo features a stylized blue and white graphic of a cross or network structure to the left of the word "NEWADA" in large, bold, blue capital letters.



# Project 4: WANDA

- **Project: Waste Management for Inland Navigation on the Danube**
- **EU Funding programme: SEE**
- **Total value: EUR 1.6 Mill**
- **EU funding rate: 85%**
- **Timeframe: 2009-2012**
- **Number of partners: 9**
- **Number of countries: 7**
- **Objective: Protect the Danube River**
- **Measure: Using RIS for waste management**

**Follow up project foreseen (2012-2014)**



# Challenges Ahead

Using  
the full potential of IWWs

Applying  
European and UNECE standards in IWT

Improving  
cross-border and regional cooperation

Promoting  
inland waterway transport

The goal is to achieve **standardized level of navigation safety and harmonized services** on the Danube River, and to become a **fully integrated** part of the European IWW network



International IWW Network in Serbia

Directorate for Inland Waterways

Strategic Framework

EU Funded Projects – Strategic Partnerships

Challenges Ahead



EU Danube Region Strategy: Technical Secretariat for Priority Area 1a:  
To improve mobility and multimodality: Inland waterways

**2<sup>nd</sup> meeting of the Steering Group**

# Thank You For Your Kind Attention

**Directorate for Inland Waterways**  
Bucharest, 28-10-2011