

WATERBORNE TRANSPORT DEVELOPMENT AGENCY

A large cargo barge is being pushed by a tugboat on a wide river. The barge is dark-colored and carries a significant amount of cargo, including stacks of materials. The tugboat is white with a green stripe and is positioned at the front of the barge. The river is wide and calm, with a forested bank visible in the background. The sky is overcast.

Vladimír Novák, director

Bucharest, 27. October 2011

RESPONSIBILITY IN THE FIELD OF WATERBORNE TRANSPORT IN THE SLOVAK REPUBLIC BEFORE 2011

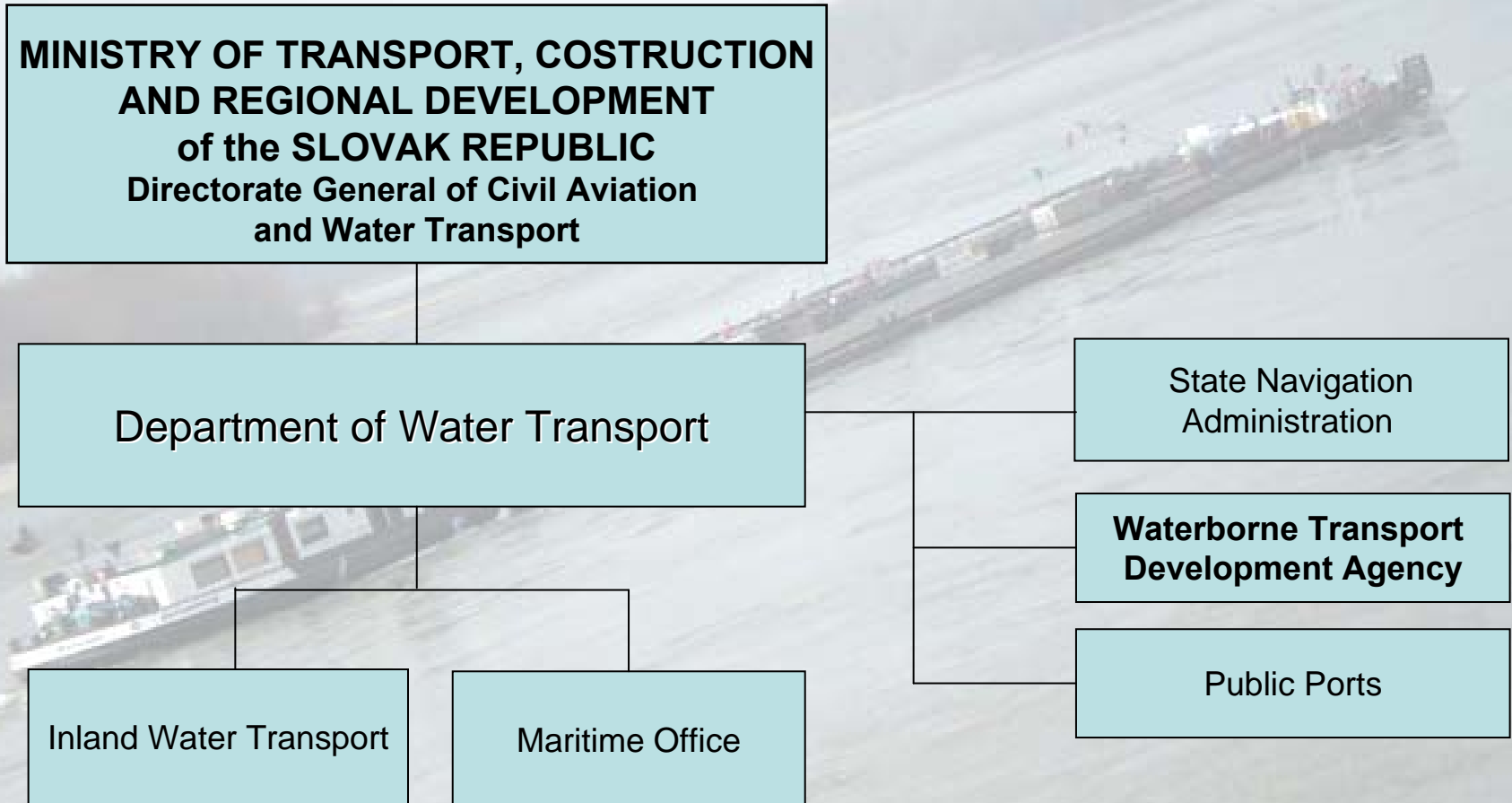
1. Ministry of Transport, Construction and Regional Development of the Slovak republic
 - 1.1. State Navigation Administration (Štátna plavebná správa)
 - 1.2. Public Ports, a.s. (Verejné prístavy, a.s.)
2. Ministry of Environment of the Slovak republic
 - 2.1. Slovak Water Management Enterprise, š.p. (Slovenský vodohospodársky podnik, š.p.)

RESPONSIBILITY IN THE FIELD OF WATERBORNE TRANSPORT IN THE SLOVAK REPUBLIC AFTER 2011

Establishment of the Waterborne Transport Development Agency

- a) in accordance with the Slovak Government Resolution No. 275 of 8 April 2009 on transfer of competencies related to the management and development of waterways
- b) in accordance with the Slovak Government Resolution No. 642 of 16 September 2009 on the General program on the implementation of NAIADES in Slovakia
- c) according to the Act No. 556/2010 Z.z amending the Act No. 338/2000 Z.z. on inland navigation

STRUCTURE



WATERBORNE TRANSPORT DEVELOPMENT AGENCY LETTER OF ESTABLISHMENT

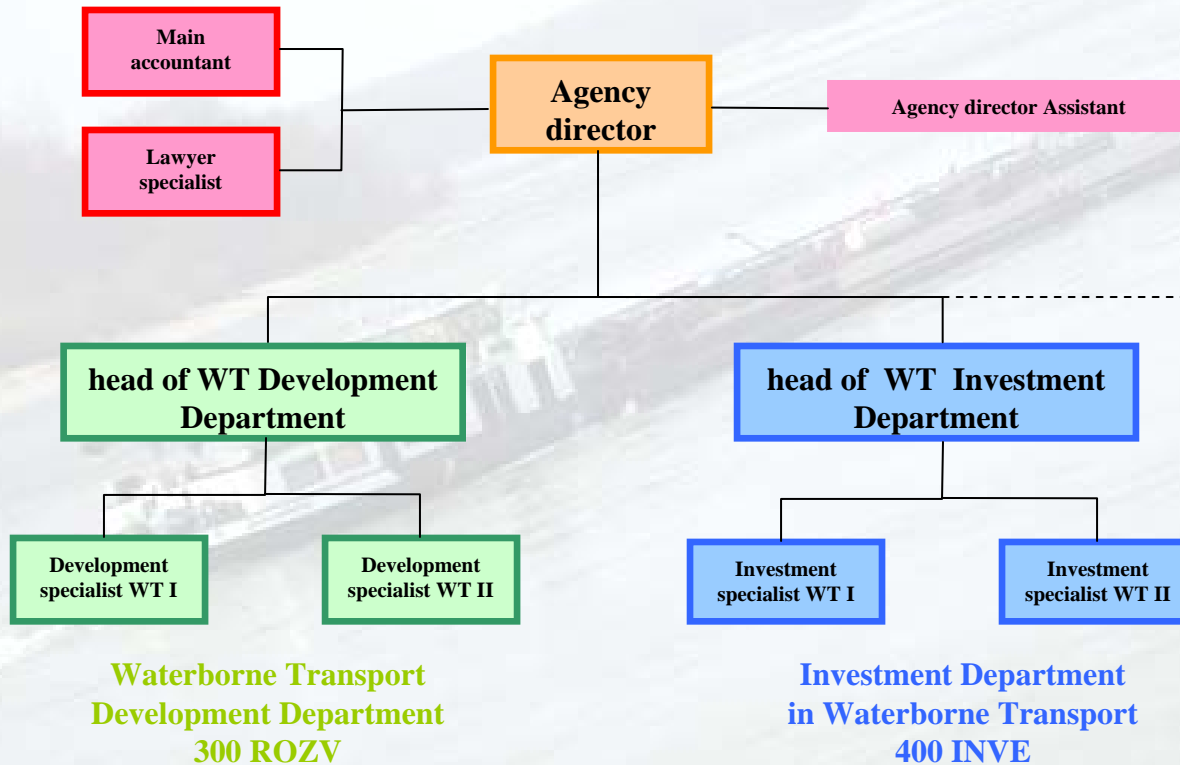
by the Minister of Transport, Construction and Regional Development No.155 of 31 December 2010 on issue (publication) of the Letter of Establishment of the Waterborne Transport Development Agency, which:

- has been established for an indefinite period
- in terms of material and financial definition of the property it has no property (without right to manage it)
- is a state budgetary organization linked to the budget of the Slovak Republic through the Ministry of Transport, Construction and Regional Development of the Slovak Republic

WATERBORNE TRANSPORT DEVELOPMENT AGENCY ORGANIZATIONAL STRUCTURE

**OPERATION
DEPARTMENT**
200 PREV

**OFFICE
DIRECTOR**
100 RIAD



OUTSOURCING

- fire protection,
- work safety and health protection
- information and communication technologies,
- maintenance,
- public procurement,
- tax advice
- etc.

**Act No. 556/2010 Z.z.,
amending the Act No. 338/2000 Z.z.
on inland navigation**

The Agency provides:

- 1. development and modernization of waterways in accordance with the approved transport policy;**
 - 2. preparation and implementation of construction and reconstruction of parts of waterways and other structures necessary for operation of water transport on the waterways, for its management and maintenance, and procurement of additional property necessary for operation and maintenance of waterways;**
 - 3. supporting documents for processing of concepts in the field of monitored waterways and perspective monitored waterways according to a mutual agreement with the relevant manager of the watercourse;**
 - 4. promotion of inland navigation**
- P: coordinator dealing with individual parts of the General program for the Development of the Inland Waterway Transport in the slovak republic (for Example NAIADES / PLATINA)**

**Act No. 556/2010 Z.z.,
amending the Act No. 338/2000 Z.z.
on inland navigation**

Agency

- **prepares** documents, proposals and justifications for obtaining and efficient distribution of funds for investment in waterways;
- **coordinates and ensures** the repairs, reconstruction and modernization of the waterway parts;
- **implements** pilot projects of development of intermodal transport axis (NAIADES);
- **participates in** the development and implementation of new technologies and operating systems on waterways (NAIADES);
- **performs** the above mentioned activities in interaction with relevant government bodies

WATERBORNE TRANSPORT DEVELOPMENT AGENCY TASKS OF THE GENERAL PROGRAMME OF IMPLEMENTATION OF NAIADES FOR 2011 IN THE SLOVAK REPUBLIC (Concepts, infrastructure)

- Concept of development of inland waterways of the Slovak republic - Update
- Improving the parameters of the fairway of the Danube
r.km 1797-1790
 - Model Research – project
 - Implementation
- Reconstruction of the port berths and its equipment in the Port of Bratislava
- Reconstruction of the port berths and its equipment in the Port of Komárno

Inland waterways in Slovakia



Inland waterways in Slovakia

Danube

E80

main waterway, Slovak stretch, length 172 km
(between mouth river Morava and mouth river Ipeľ)

Váh

E81

perspective waterway (not complete), length 250 km
(between Komárno and Žilina)

Plans

finishing the Váh waterway construction and, subsequently, building the canal connection to rivers Oder and, if feasible, Vistula

Ports

Transshipment of cargo

The Port of Bratislava:

- transshipment of bulk cargo
- transshipment of general cargo
- transshipment of liquid cargo
- transshipment of overweight and over dimensional cargo
- Ro-Ro facility

The Port of Komárno:

- transshipment of bulk cargo
- transshipment of general cargo
- warehousing

Port Bratislava



Transport of goods in port Bratislava in 2010

Total

2 746 000 tons

of which

Dry goods

Iron ore, iron and steel waste

1 466 000 tons

Coal, coke

265 000 tons

Artificial fertilizers

173 000 tons

Liquid goods

Diesel

513 000 tons

Gasoline

156 500 tons

Heavy fuel oil

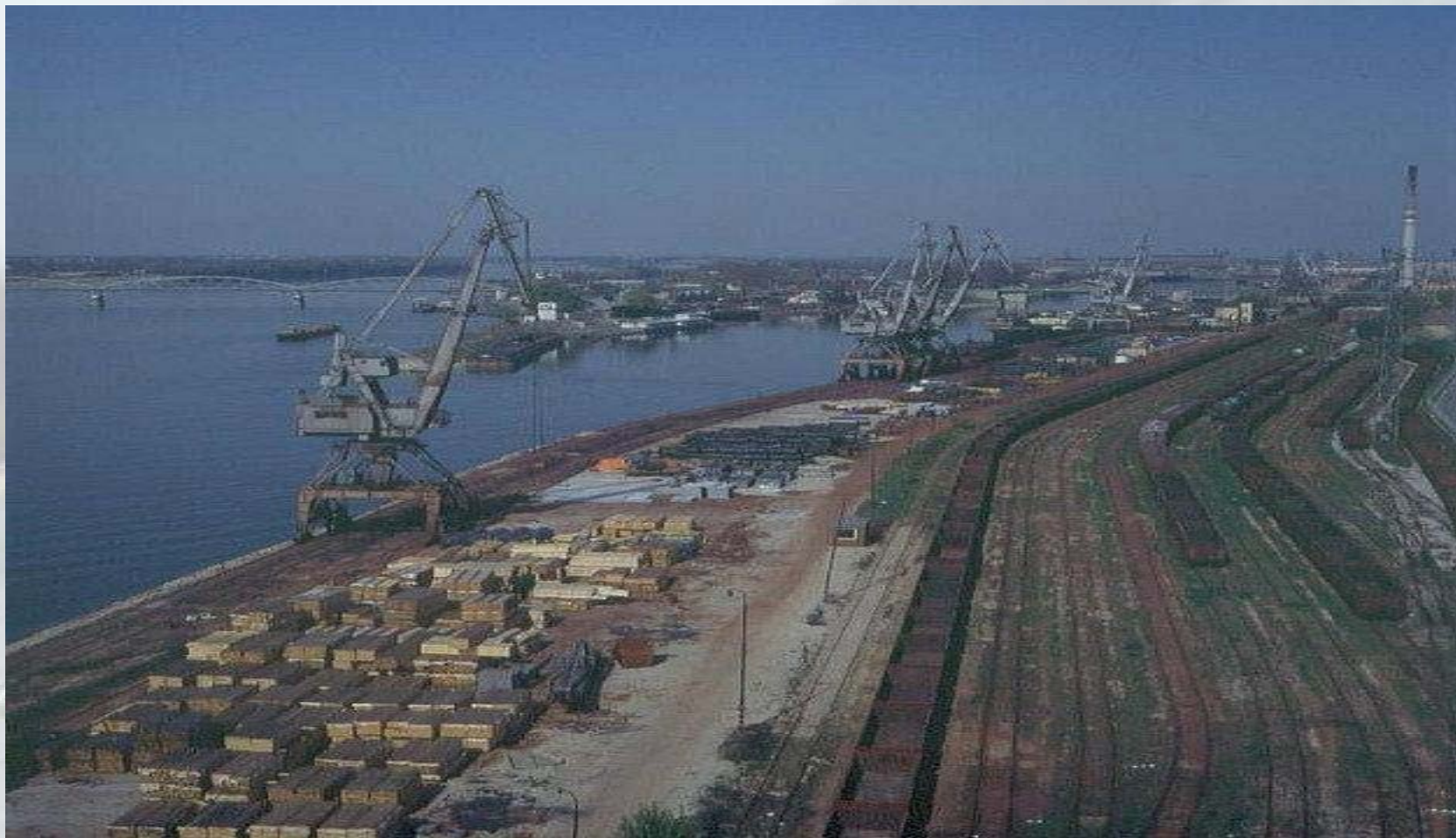
117 000 tons



Passenger transport in port Bratislava in 2010



Port Komárno



Transport of goods in port Komárno in 2010

Total

457 000 tons

of which

Dry goods

Coal, coke

195 500 tons

Iron ore, iron and steel waste

43 500 tons

Artificial fertilizers

30 200 tons

Liquid goods

Diesel

133 000 tons

Gasoline

43 000 tons



THANKS FOR YOUR ATTENTION

A large cargo barge is shown on a wide river, moving from the foreground towards the background. The barge is dark-colored and carries various goods, including what appears to be a large white container. The riverbank in the background is covered with dense, dark trees. The sky is overcast and grey.

contact:

Waterborne Transport Development Agency Vladimír Novák

Nám. slobody č.6

00421 917 957 270

810 05 Bratislava

00421 2 594 94 752

Slovak republic

vladimir.novak@arvd.gov.sk