



**Ministry of Regional Development
and Public Works
BULGARIA**



**Ministry of Transport
ROMÂNIA**

***Interministerial Committee for Sustainable Development of Inland
Waterway Transport on the Romanian – Bulgarian common sector of
the Danube***





Danube river – the core element of the Danube Strategy



- Length – 2 912 km
- The common Bulgarian-Romanian section of the Danube river is **471 km**
- This section of the river is one of the most well-preserved natural sectors and is characterized by great water-bed width, shallows, numerous islands, and intensive morphological processes.



Waterway navigation current situation



Characteristics for the common sector:

- Frequently shifting river bed with little predictability – a key problem
- Hazardous “banks” underneath the water level, causing additional threats and at times rendering river navigation impossible due to sand and sediments pushed by the river
- Direct influence of the operation of the Iron Gates I and II on the water quantities and the annual volume of sediment discharge in the upper Bulgarian-Romanian sector
- Increased erosion and negative effect upon the banks and riverbed due to the reduced water flow and decrease in suspended sediments
- Frequent fairway alteration due to the great changes of river sediments in shoal sections and the critically low water levels in 2011
- Considerable seasonal water level variation (about 8 meters)



Interministerial Committee for Sustainable Development of Inland Waterway Transport on the Romanian – Bulgarian common sector of the Danube



“Roadmap for an action: Development of Pan European corridor VII through improvement of the navigability on the Romanian – Bulgarian common sector of the Danube river, modernization of the port infrastructure, promotion of the intermodal transport, surrounding infrastructure and development of the information systems using Connecting Europe Facility”

- The Roadmap was elaborated in February 2012, presented in the SG of PA 1a - inland waterway transport - and approved as an action of the general Roadmaps for PA 1a related to the Inland Waterway Transport Policies.
- It contributes to reach the PA 1a targets “Increase the cargo transport on the river by 20% by 2020 compared to 2010” and “Solve obstacles to navigability ... and establish effective waterway infrastructure management by 2015”.
- Both countries to indentify a project list with the possible projects to be developed according to their readiness as list of projects to be prepared and implemented till 2020; till 2030; till 2050. Set up a joint strategy for the development of the region
- Danube is part of the proposed core network corridor in CEF - 10. Strasbourg- Danube corridor and pre-indentified section “Danube”



Interministerial Committee for Sustainable Development of Inland Waterway Transport on the Romanian – Bulgarian common sector of the Danube



- **31 May 2012**, Ruse (BG) – start of the negotiation process for the *Memorandum of Understanding between the Government of Romania and the Government of the Republic of Bulgaria on setting up an Inter-ministerial Committee for sustainable development of the inland waterway transport, on the Romanian – Bulgarian common sector of the Danube*
- **11 October 2012**, Sofia (BG) – signing of the MoU by the ministers of transport from RO and BG
- **14 December 2012**, Bucharest (RO) – 1st meeting of the Interministerial Committee
- **11 February 2013**, Bucharest (RO) – 2nd meeting of the Interministerial Committee followed by a meeting with representatives of the industry and environmental NGOs
- **10 April 2013**, Ruse (BG) – 3rd meeting of the Interministerial Committee
- **End of May 2013** – 4th meeting of the Interministerial Committee



Interministerial Committee for Sustainable Development of Inland Waterway Transport on the Romanian – Bulgarian common sector of the Danube



Members of the Interministerial Committee

- RO:** - chaired by the Secretary of State of the Ministry of Transport and National Contact Point for EUSDR (Ministry of Foreign Affairs)
- Ministry of Regional Development and Public Administration, Ministry of Environment and Climate Changes, Ministry of European Funds, Ministry of Public Finance, Ministry of Interior.
- BG:** - chaired by the Secretary of State of the Ministry of Transport and National Contact Point for EUSDR (Ministry of Regional Development and Public Works)
- Ministry of Environment and Water, Ministry of Foreign Affairs, Ministry of Finance, Ministry of Interior, a representative of the Cabinet of the Minister for EU Funds Management.

At each meeting of the Interministerial Committee representatives of the institutions of the European Union and the TEN-T Coordinators are invited to participate



Interministerial Committee for Sustainable Development of Inland Waterway Transport on the Romanian – Bulgarian common sector of the Danube



Tasks of the Interministerial Committee

- to adopt an Action Plan for common projects, to be prepared and implemented on a short-term basis till 2020, on a medium-term basis till 2030, and on a long-term basis till 2050.
- to identify the funding sources for the projects included in the Action Plan.
- to monitor the implementation of the Action Plan.
- to provide support for proper and duly implementation of the Action Plan.
- to analyze and revise the bilateral legal framework regarding the maintenance and improvement of the fairway on the Bulgarian - Romanian common sector and proposing amendments
- to support the setting up of an European Grouping for Territorial Cooperation, according to Regulation (EC) No 1082/2006 of the European Parliament and of the Council of 5 July 2006 on a European grouping of territorial cooperation (EGTC) to implementing common projects and manage the activities on ensuring the minimum navigation conditions on the Bulgarian - Romanian common sector of the Danube.



Interministerial Committee for Sustainable Development of Inland Waterway Transport on the Romanian – Bulgarian common sector of the Danube



Action Plan (adopted – on the 2nd meeting)

- Improving the navigation conditions for the Romanian - Bulgarian common sector of the Danube
- Setting up of an EGTC
- Unification of the reference system used in Romania and Bulgaria on the Danube River and introduction of the European systems
- Morphological and hydrodynamic study in establishing the sediment accumulation conditions in areas with difficulties for navigation on the Danube
- Study on hydrological parameters evolution in order to determine levels characteristics for navigation on the Danube
- Improving procurement system and data processing for drawing and updating the navigation charts on the Danube
- RIS Data Exchange
- Improving the connectivity between Romania and Bulgaria
- Amending the Agreement between Romania and Bulgaria regarding the maintenance and improvement of the fairway on the Romanian – Bulgarian common sector, (signed in 1955)



Interministerial Committee for Sustainable Development of Inland Waterway Transport on the Romanian – Bulgarian common sector of the Danube



Experts Groups (adopted – on the 3rd meeting)

- Experts Working Group on Improving the navigation conditions on the Romanian – Bulgarian common sector of the Danube (RO)
- Experts Working Group on connectivity (BG)
- Experts Working Group on bilateral legal framework and EGTC (RO)
- Experts Working Group on infrastructure and maintenance (BG)

The EWG is performing the following tasks:

- Ensure transparency during the Project phases;
- Coordinate the proper and timely preparation of the documents for the Project
- Exchange of information about the Project;
- Provide independent and professional inputs and guidance for the Project;
- Discuss and provide recommendations related to the Project, which are not obligatory for the IC.
- The decisions as regards the Project are taken only by the IC.

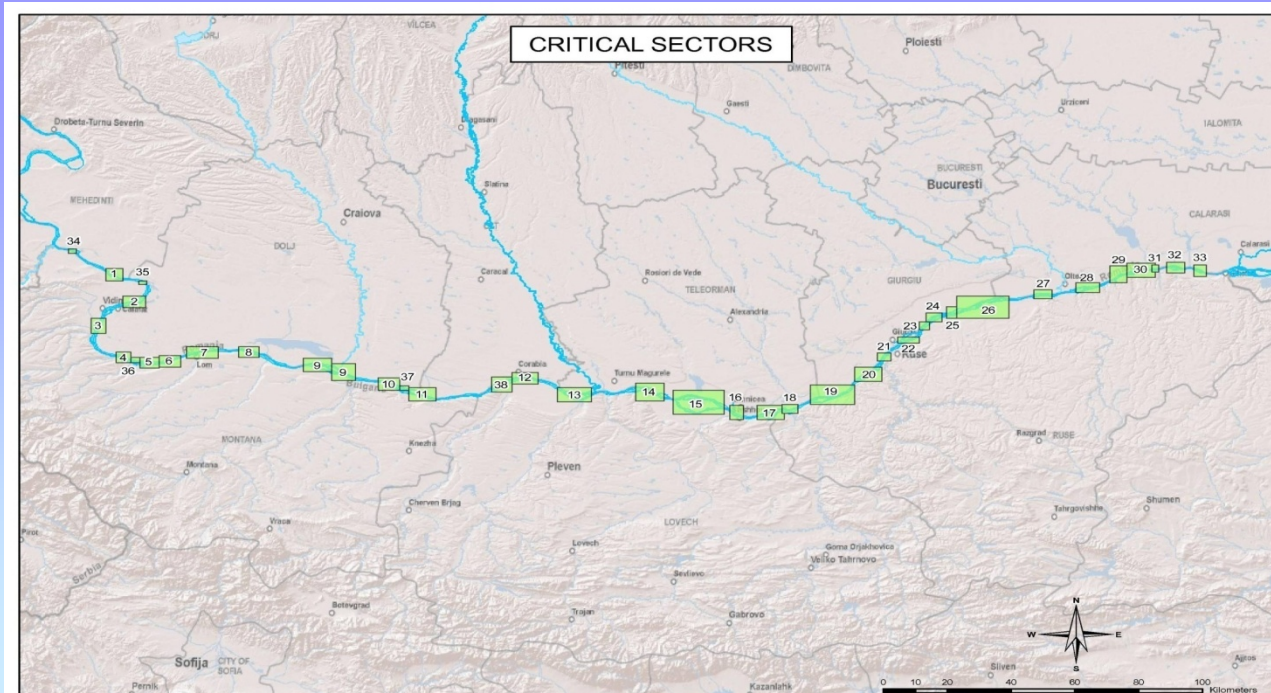


Interministerial Committee for Sustainable Development of Inland Waterway Transport on the Romanian – Bulgarian common sector of the Danube



Improving the navigation conditions for the Romanian - Bulgarian common sector of the Danube

- Identified around 33 critical points
- Feasibility study: 2007 – 2011, 2.58 MEURO (ISPA & state budget) → Environment Agreement not obtained in Romania and Bulgaria



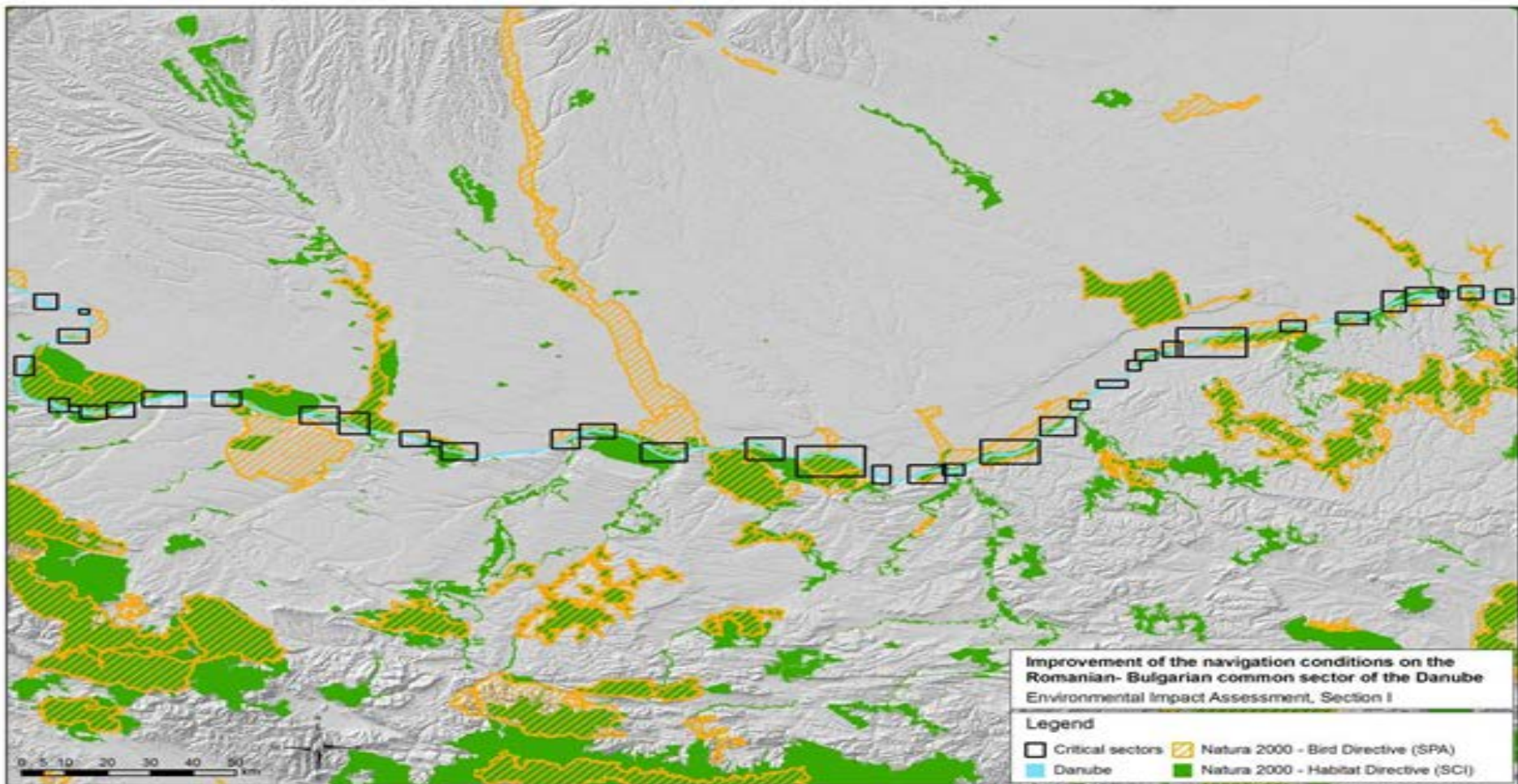


Interministerial Committee for Sustainable Development of Inland Waterway Transport on the Romanian – Bulgarian common sector of the Danube



Improving the navigation conditions for the Romanian - Bulgarian common sector of the Danube

Natura 2000 sites within the critical sectors





**Interministerial Committee for Sustainable Development of Inland Waterway Transport
on the Romanian – Bulgarian common sector of the Danube**



**Improving the navigation conditions for the Romanian - Bulgarian common sector of the
Danube – next steps:**

1. Gap Analysis - JASPERS through a FWC Consultant to be procured by mid April.
Delivery time: approx. 3 months i.e. end **July 2013**

Review of the AA, EIA, FS, CBA

Consultation with competent authorities in BG, RO + EC (DG ENV), etc.

Review project implementation options e.g. separate detailed design / construction vs. design & build contract.

Analysis of institutional/project management options incl. opportunity of EGTC

Prepare ToR for “gap filling” services.

2. Gap Filling To be financed, procured & contracted by RO. Procurement time: approx.
6 months i.e. end 2013 . Delivery time: approx. 6 months i.e. **mid 2014**

Revision of the AA, EIA, CBA, FS

Review/re-confirmation/revision of the decision re. selection of the preferred alternative

Preparation of the funding application under CEF

Preparation of tender documents for the design (& build?) contract.



Interministerial Committee for Sustainable Development of Inland Waterway Transport on the Romanian – Bulgarian common sector of the Danube



Improving the navigation conditions for the Romanian - Bulgarian common sector of the Danube – next steps:

3. Restarting the EIA / Natura 2000 procedure. BG/RO authorities (including public consultations, transboundary consultations, possibly DG Environment clearance on compensatory measures): approx: 12 months, i.e. **mid 2015**

Resubmission of the revised AA/EIA to the competent authorities in both countries
Carrying out the full AA/EIA procedure in both countries.

4. Implementation

Project management structure - EGTC

2015 - 2016 - Procurement of D/B or D&B contract

2016 - 2019 - Construction period



Thank you for your kind attention!



Monica Patrichi

Ministry of Transport

Naval Transport Directorate

Tel. 0040 21 319 61 11

Fax 0040 750 032 441

E-mail monica.patrichi@mt.ro