



Nemzeti
Közlekedési
Hatóság



NEMZETI FEJLESZTÉSI
MINISZTERIUM



Waterway infrastructure maintenance

HUNGARY

EUSDR PA1a Steering Group Meeting - Linz, 17-18th April 2013





1) Riverbed surveying

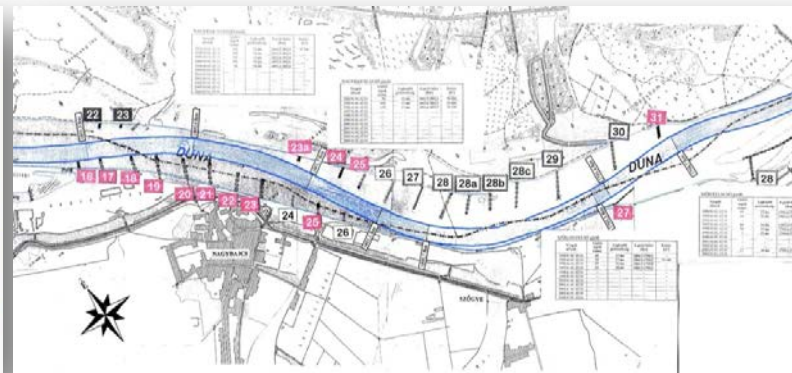
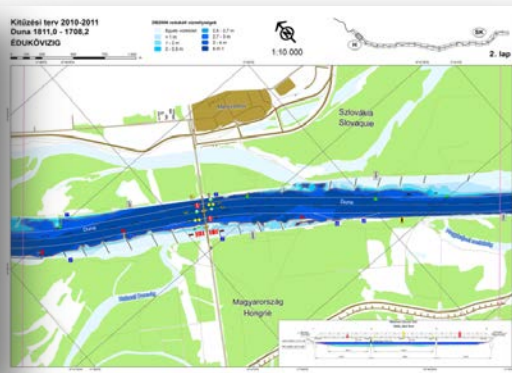
Measures taken in 2012	Measures foreseen for 2013
<p>Frequency:</p> <p>ÉDU-VIZIG: from 04.09 to 25.10</p> <p>KDV-VIZIG: 2 times at 30.10. and 15.11.</p> <p>ADU-VIZIG: 1 times/places</p>	<p>Frequency:</p> <p>ÉDU-VIZIG: not decided</p> <p>KDV-VIZIG: 4 times</p> <p>ADU-VIZIG:1 times/places</p>
<p>Location(s):</p> <p>ÉDU-VIZIG: whole section between 1749 and 1811 rkm</p> <p>KDV-VIZIG: shallow section at Kulcs 1590+100, Kisapostag 1567+300 and Dunaföldvár 1561+000</p> <p>ADU-VIZIG: shallow section at Mohács 1449, Harta 1542+300 and Paks 1530+050</p>	<p>Location(s):</p> <p>ÉDU-VIZIG: whole section between 1750 and 1708 rkm</p> <p>KDV-VIZIG: shallow section at Ercsi (1615,90), Dunaújváros (1581,50), Dunafüred (1618,50) and Göd (1667,50)</p> <p>ADU-VIZIG: shallow sections between 1520,00 and 1560,50 rkm</p>
<p>Equipment:</p> <p>ÉDU-VIZIG: 6 m long open smallboat, single beam echo sounder with geodetic RTK-GPS</p> <p>KDV-VIZIG: signalling vessel, ADCP with geodetic RTK-GPS</p> <p>ADU-VIZIG:6 m long open smallboat, single beam echo sounder with geodetic RTK-GPS</p>	<p>Equipment:</p> <p>ÉDU-VIZIG: 6 m long open smallboat, single beam echo sounder with geodetic RTK-GPS, No</p> <p>KDV-VIZIG: 6 m long open smallboat, ADCP with geodetic RTK-GPS, No</p> <p>ADU-VIZIG: 6 m long open smallboat, single beam echo sounder with geodetic RTK-GPS, No</p>
<p>Costs:</p> <p>ÉDU-VIZIG: about 15.000 Euro</p> <p>KDV-VIZIG: about 5.000 Euro</p> <p>ADU-VIZIG: about 5.000 Euro</p>	<p>Costs:</p> <p>ÉDU-VIZIG: about 15.000 Euro</p> <p>KDV-VIZIG: about 7.000 Euro</p> <p>ADU-VIZIG: about 10.000 Euro</p>



2) Dredging of problematic areas


Measures taken in 2012	Measures foreseen for 2013
Frequency:	<p>Proactive measures:</p> <p>There are no planned dredging activities in 2013</p>
There were no dredging activities in 2012	
Location(s):	
There were no dredging activities in 2012	
Equipment:	
There were no dredging activities in 2012	
Costs:	
There were no dredging activities in 2012	

JEL jelölés	Információ	Jobb part					Bal part				
		Partmögébredés elhelyezése jelölés					Partmögébredés elhelyezése jelölés				
(km)		HSZ.A	HSZ.B	HSZ.C	HSZ.D	HSZ.A	HSZ.B	HSZ.C	HSZ.D	HSZ.A	
1809,25	ACN - VHF 22										
1809,95	Próbák sorjái										
1808,85	Próbák sorjái										
1808,50	Próbák sorjái										
1808,45											
1808,10											
1807,75											
1807,60											
1807,50	(D) (VHF)										
1807,50											
1806,32	Műhely hál felállítás										
1807,32	Műhely hál felállítás										
1806,32	Műhely hál felállítás										
1806,32	Műhely hál felállítás										
1806,32	Műhely hál felállítás										
1806,20	Műhely hál felállítás										





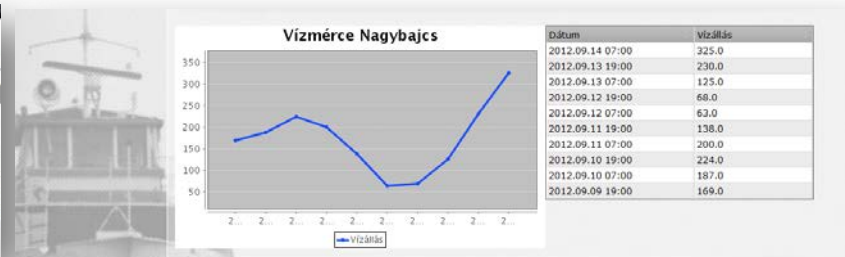
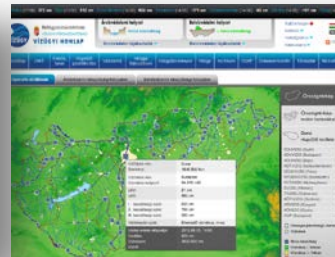
3) Signalling of the fairway

Measures taken in 2012				Measures foreseen for 2013			
Frequency:				Frequency:			
ÉDU-VIZIG: at least every second week throughout the whole year with one signaling vessel downstream up to Szob (1708)				ÉDU-VIZIG: at least every second week throughout the whole year with one signaling vessel upstream up to Szap (1811)			
KDV-VIZIG: at least every second week throughout the whole year, one week upstream up to Szob (1708), other week downstream from Budapest up to Dunaföldvár (1560) with two signaling vessel				KDV-VIZIG: at least every second week throughout the whole year, one week upstream up to Szob (1708), other week downstream from Budapest up to Dunaföldvár (1560) with two signaling vessel			
ADU-VIZIG: every week with two signaling vessel one from Baja (1479) to Mohács (1433), the other from Baja (1479) to Dunaföldvár (1560)				ADU-VIZIG: every week with two signaling vessel one from Baja (1479) to Mohács (1433), the other from Baja (1479) to Dunaföldvár (1560)			
Location(s):				Location(s):			
ÉDU-VIZIG: 1791 – 1708 rkm (1791 – 1811 rkm)				ÉDU-VIZIG: 1811 – 1791 rkm (1791 – 1708 rkm) section exchange with SK			
KDV-VIZIG: 1708 – 1646 / 1646 – 1560 rkm				KDV-VIZIG: same			
ADU-VIZIG: 1560 – 1479 / 1479 – 1433 rkm				ADU-VIZIG: same			
Type:				Type:			
Activity	ÉDU-VIZIG	KDV-VIZIG	ADU-VIZIG				
section length	83 km	148 km	127 km				
mileage:	6.790 km	7.920 km	17.557 km				
hours of operation:	620	800	1202				
replacing floating signs:	28	37	2				
replacing lost anchors:	23	120	7				
replacing radar reflectors:	33	40	2				
land signal works*:	18	14	75				
In 2012 there was no need for realignment of the fairway. Signalling works were done according to signalling plans.							
*works included ensuring the visibility of land signs, maintenance, painting, etc.							
Costs:				Costs:			
ÉDU-VIZIG: 46.607.602 Ft (290 Ft/Euro) ~ 160.720 Euro				No information			
KDV-VIZIG: 54.789.000 Ft (290 Ft/Euro) ~ 189.950 Euro							
ADU-VIZIG: 67.350.000 Ft (290 Ft/Euro) ~ 232.250 Euro							




4) Information to the users of the waterway

Measures taken in 2012	Measures foreseen for 2013
<p>Type:</p> <p>Fairway parameters of location, depth, length and width at actual water level when the fairway parameters does not meet the requirements on signalling tables at Komárom, Sturovó (SK), Budapest, Mohács</p> <p>Fairway parameters, water levels and 4 day water level forecast throughout NAVINFO radio station at radio channel VHF 16 and 22 every day at 10:00, 11:30, 12:30 based on OVF information</p> <p>Frequency:</p> <p>One time a day</p> <p>Media:</p> <p>Fairway parameters of location, depth, length and width at actual water level when the fairway parameters does not meet the requirements can be reached via www.hydroinfo.hu</p> <p>011/Du/2012. Notices to Skippers about the shallow section of Hungarian stretch of the Danube (updated every year) http://www.nkh.hu/Hajozas/Kozlem/HSZH/Lapok/Duna.aspx</p>	<p>Type:</p> <p>same as 2012, no</p> <p>Frequency:</p> <p>One time a day, no change</p> <p>Media:</p> <p>same as 2012</p>





5) Procedures in extraordinary circumstances

Measures taken in 2012	Measures foreseen for 2013
<p>Type of circumstance:</p> <p>Ice period:</p> <p>when the temperature reach 2°C or floating ice can be predicted about half of the floating signs are collected and lighting signs are replaced with “normal” buoys.</p> <p>when the 20 or more percent of surface of river filled with floating ice all floating signs are collected, ice-breakers are put on stand-by</p> <p>when the 60 or more percent of surface of river filled with floating ice navigation is cancelled</p> <p>Low water period:</p> <p>additional floating signs are placed at critical sections in order to ensure safe navigation</p> <p>High water period:</p> <p>when HNWL is predicted floating signs are temporarily removed from their place and put it to safe position because a huge amount of driftwood easily shift away the signs</p> <p>navigation is possible at high water, till it is not prohibited by the shipping authority or limited by bridges</p> <p>after the flood peak, the floating signs permanently reinstated according to signalling plan.</p>	<p>Implementation:</p> <p>same as 2012</p> 
<p>Status:</p> <p>there are no specific measure taken</p>	



Cross-border activities

Cooperation in the Slovak - Hungarian Border Commission of Water management :

1. Marking plan (rotating by every second year)
2. Waterway maintenance plan (rotating by year)
3. Annual joint report of the waterway conditions
4. Common fairway marking (with rotating sectors every 2nd years)
5. Joint Danube riverbed measurements, data exchange
6. Coordination of protection against ice, if necessary, with Hungarian ice-breaker



Cooperation in the Serbian-Hungarian Border Commission of Water management :

1. Coordinated flood control and river training
2. Common hydrologic and water quality measurements, data collection, exchange

Hungarian-Serbian-Croatian co-operation:

1. Coordination of protection against ice, if necessary, with Hungarian ice-breakers



Nemzeti
Közlekedési
Hatóság



NEMZETI FEJLESZTÉSI
MINISZTERIUM



River Information Services in Hungary


RIS
RIVER
INFORMATION
SERVICES



RIS in Hungary is provided by RSOE – Budapest
Tel.: +36-1/469-4164, Fax: +36-1/469-4167
Mobil: +36-20/202-7763, VHF 16-22
During the operation the broadcasts on the communication channels will be recorded.

PannonRIS Nemzeti Közlekedési Hatóság

Registered users:
Username:
Password:
Login

Other language: HU | EN | DE

Home page | Information | Notices to shippers | About

Welcome to the PannonRIS website!

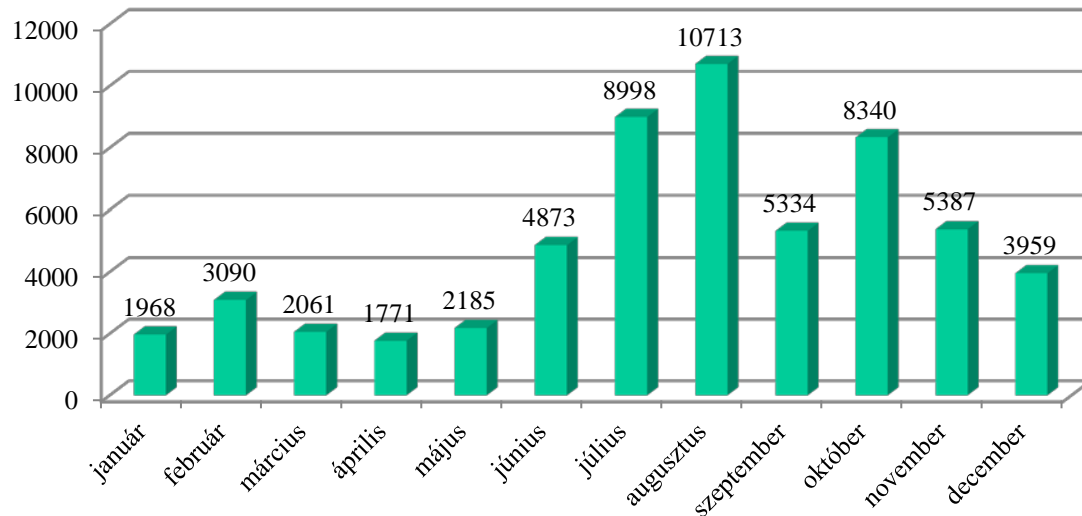
River Information Services (RIS) means the harmonised information services to support traffic and transport management in inland navigation, including, wherever technically feasible, interface with other transport modes. RIS do not deal with internal commercial activities between one or more of the involved companies, but are open for interfacing with commercial activities. RIS comprise services such as fairway information, traffic information, traffic management, calamity abatement support, information for transport management, statistics and customs services and waterway charges and port dues.

The PannonRIS system is permanently developed and operated in the framework of the co-operation between the Ministry of National Development, the National Transport Authority and the National Association of Radio Distress-Signalling and Infocommunications (RSOE). The PannonRIS website offers support for the Danube navigation 24 hours-a-day.



River Information Services in Hungary - Statistics

VHF calls in 2012



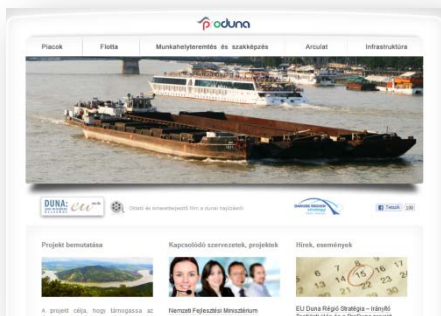
5,917 people visited this site

- Visits: 11,538
- Unique Visitors: 5,917
- Pageviews: 19,838
- Pages / Visit: 1.72
- Avg. Visit Duration: 00:02:12
- Bounce Rate: 59.46%
- % New Visits: 49.61%





Projects under implementation / running in 2013



IRIS Europe projektek		e-Freight	
NELI		CBRIS II	
NEWADA		Move IT!	
PLATINA		SEEMariner	
RISING		Empiric	
Tanulmányok a Duna hajózási- és közlekedési helyzetéről		Waterways Forward	
WANDA		ADB Multiplatform	
DaHar		DATOURWAY	
WATERMODE		NEWADA duo	
INWAPO		HINT	
ECCONET		CO-WANDA	
		GIFT	



More information under

http://produna.hu/kapcsolodo_projektek/



Nemzeti
Közlekedési
Hatóság



NEMZETI FEJLESZTÉSI
MINISZTERIUM



Thank you for the kind attention!

József Horváth

horvath.jozsef@nkh.gov.hu

Róbert Rafael

robert.rafael@rsoe.hu

