

9th meeting of Steering Group

Priority Area 1a of the Danube Region Strategy
on Inland Waterways

Vienna | 22nd April 2015



Agreement on minutes of last meeting

Agenda of today's meeting

Reinhard Vorderwinkler, PAC 1a

Agenda of today's meeting

10:30 – 10:45 **Agreement on minutes of last meeting and agenda of today's meeting**
Reinhard Vorderwinkler (PAC 1a)

10:45 – 11:00 **State of play in Priority Area 1a on Inland Waterways and Work Plan 2015-2016**
Gudrun Maierbrugger (viadonau, PA1a Joint Technical Secretariat)

11:00 – 11:15 **Decision on membership of Pro Danube International as permanent observer to Steering Group**
Austrian & Romanian Priority Area 1a Coordinators

11:15 – 11:30 **Information on START II and TAF Calls 2015**
Gudrun Pabst, Priority Area 10

11:30 – 11:45 **DANUBE 2014-2020 - Danube Transnational Programme**
Irina Cruceru, DG REGIO

11:45 – 12:00 **Status of PA1a Working Group on Administrative Processes**
Katja Rosner (viadonau)

EU Strategy for the Danube Region

Priority Area 1a – To improve mobility and multimodality: Inland waterways



-
- 13:00 – 13:10** **Introduction**
Mr Andrea Mairate (Head of Unit, DG REGIO)
-
- 13:10 – 13:30** **Implementation of the Fairway Rehabilitation and Maintenance Master Plan: coordinated national roadmaps / introductory remarks**
Reinhard Vorderwinkler (PAC 1a)
Intervention by
Director Olivier Onidi (DG MOVE, European Commission)
-
- 13:30 – 13:50** **Implementation of Fairway Rehabilitation and Maintenance Masterplan (FRMMP):**
- Status of signatures of Danube Transport Ministers since 3rd December 2014
 - Final results of NEWADA duo project
 - Status of “FAIRway” project proposal as submitted to the CEF programme on 26th February 2015
 - Template for national roadmaps for the implementation of the FRMMP
 - Proposed time line towards first draft of coordinated national roadmaps for the implementation of the FRMMP
- Gert-Jan Muilerman (viadonau, PA1a Joint Technical Secretariat)*
-
- 13:50 – 15:15** **Tour de Table: feedback on national roadmaps towards the implementation of the FRMMP**
-
- 15:15 – 15:30** **Conclusions and decisions on next steps**
Reinhard Vorderwinkler (PAC 1a)
-

State of play in PA1a

Gudrun Maierbrugger

Milestones since 8th SG meeting (Vukovar, 29 Oct 2014)

Proposed PA 1a Work Plan 2015/16

SG agreement needed today

➤ Fairway Rehabilitation and Maintenance Master Plan

- **Finalisation** of main document by Steering Group/NEWADA duo project partners (13 Nov 2014)
- **Endorsement** by majority of Danube Transport Ministers (3 Dec 2014)
- **Roadmaps to plan and monitor implementation** to be prepared until **30th June 2015**
- **Prioritisation** of critical locations by Danube waterway users (24 major operators → 11 hot spots)



➤ Fairway Rehabilitation and Maintenance Master Plan

- **FAIRway**: project proposal to implement master plan submitted under “Connecting Europe Facility” (March 2015)
 - Separate project proposal
 - Coordination with SG required
- **1st draft template for roadmaps** prepared by PA 1a Technical Secretariat (April 2015)



CEF-Proposal FAIRway
Harmonized realization of the Fairway Rehabilitation and Maintenance Master Plan



➤ **Working Group on Administrative Processes**

- First results of survey on administrative barriers during border controls



➤ **1st START call 2014 by PA 10**

- 2 projects for PA1a selected (POPEI, Training4Ports)

➤ **Progress Report 2012-2014**

- Accepted by SG and submitted to EC

➤ EUSDR PA 1a project activities: Status quo

Status:
22/01/2015

	Waterway Infrastructure	Waterway Management	Ports and Sustainable Transport	Fleet Modernisation	River Information Services	Education and Jobs	IWT Policies	TOTAL
TOTAL	33	13	28	11	9	4	5	103
Definition	3	1	1	1	0	1	0	7
Preparation	9	4	18	1	1	1	1	35
Implementation	18	3	8	6	4	1	2	42
Completion	3	5	1	3	4	1	2	19

<http://www.danube-navigation.eu/pages/projects>

Proposed PA1a Work Plan 2015-2016

➤ **Proposed focus topics for PA 1a work plan 2015/16**

- Fairway Rehabilitation and Maintenance Master Plan
- Administrative Processes in Danube Navigation
- Innovative Danube Vessel

➤ **Steering Group Agreement required**

Decision on membership of Pro Danube as permanent observer to the PA1a Steering Group

Reinhard Vorderwinkler

EU Strategy for the Danube Region

Priority Area 1a – To improve mobility and multimodality: Inland waterways



Handelskai 265
1020 Vienna / Austria
T +43 1 890 66 47
F +43 1 890 66 47-99
office@prodanube.eu
www.prodanube.eu

Vienna, 8 April 2015

Dear Mr Muilerman,

As previously discussed, our organisation would like to request officially to become a permanent observer of the PA1A Steering Group.

Pro Danube International is a non-profit organization bringing together more than 130 private companies with a strategic economic interest in a better functioning of IWT in the Rhine-Danube corridor. Our members spread from the Netherlands to the Black Sea region and employ several thousands of people and thus contribute to economic growth and social welfare in the entire region. Already in the past, we worked closely with the European Commission services and stakeholders from the Danube states to ensure better conditions for investment in Danube fairway maintenance, port development and the modernization of the Danube fleet. Besides our policy advocacy work, we engage directly in European funding projects in order to facilitate the development of the Danube as core transport axis of the region.

The strong commitment of our organisation and the high number of stakeholders in Danube related businesses provide us with strong voice in favour of an active waterway policy and facilitates investment of the private sector.

We are therefore convinced that Pro Danube International as a permanent observer can add value to the work of the Steering Committee.

Sincerely

Alexandru Capatu

President

Decision:

- The PA1a Steering Group agrees to include Pro Danube International as permanent observer to the PA1a Steering Group

Information on START II and TAF Calls 2015

Gudrun Pabst, PA10

TAF-DRP & START II

What	TAF – DRP	START	Details
TOTAL BUDGET	€ 450.000,00	€ 450.000,00	→ for TAF-DRP services → for START funding
Planned number of PROJECTS	15 – 20	Approx. 24	→ At least one per PA → Projects from all DR countries
Planned DURATION	Approx. 6 month	6 – 8 month	→ Projects have to be concluded latest until End of July 2016
Planned AMOUNT	Approx. € 25.000,00	€ 10.000,00 - € 20.000,00	→ <u>TAF-DRP</u> : same as before → <u>START</u> : smaller amount (shorter duration)



TAF-DRP & START II

What	TAF – DRP	START	Details
Deadline DEFINITION OF THEMATIC FOCUS	4th May	4th May	<ul style="list-style-type: none"> → <u>PACs</u> and <u>SG</u> define the thematic focus of the call for their PA (optional) → <u>PACs</u> fill in and send template „thematic focus“ to IB (EuroVienna)
LAUNCH OF THE CALL (OPEN CALL)	20th May	20th May	<ul style="list-style-type: none"> → Application pack will be provided online, PACs and SG will receive an additional E-Mail → <u>Applicants</u> have time to prepare application and ask questions
Deadline APPLICATION	26th June (4 weeks)	6th July (6 weeks)	<ul style="list-style-type: none"> → Application has to be uploaded in the Online Application Tool (similar to START I)
Deadline FORMAL CHECK	14th July (2 weeks)	24th July (2,5 weeks)	<ul style="list-style-type: none"> → <u>PAC10/IB</u> verifies basic eligibility and completeness of applications. → Formally correct applications are sent to <u>PACs</u>
Deadline CONTENT CHECK and RANKING	1st September (7 weeks)	18th September (8 weeks)	<ul style="list-style-type: none"> → <u>PACs</u> +<u>SG</u> assess content of applications (PA relevance, macro-regional relevance, etc.) → <u>PACs</u> send ranking + documentation of individual assessments and procedure to IB

TAF-DRP & START II

What	TAF – DRP	START	Details
Deadline PLAUSIBILITY CHECK – FINAL RANKING	Mid- September (2 weeks)	Approx. 9th October (3 weeks)	<ul style="list-style-type: none"> → <u>PAC10/IB</u> conducts final plausibility check of best-ranked applications – incl. thematic and geographic balance → <u>PAC10/IB</u> sends final selection list to PACs
Deadline FINAL CONSULTATION of PACs+SG	End September (2 weeks)	Approx. 20th October (2 weeks)	<ul style="list-style-type: none"> → <u>PACs</u> may contact IB for clarifications regarding the final selection list; otherwise, tacit consent applies
Notification FINAL SELECTION	Beginning October	End October	<ul style="list-style-type: none"> → <u>PAC10/IB</u> notifies applicants of selection results → Contracting phase → For TAF-DRP: <u>PAC10/IB</u> requests experts to start services (inception phase) for selected applicants
Start PROJECT IMPLEMENTATION	October	Dec. 2015 / Jan. 2016	<ul style="list-style-type: none"> → START project partners start implementing activities → TAF-DRP projects start receiving services from experts

MANAGING AUTHORITY FOR TAF-DRP AND START:

Dipl.-Ing. Dr. Kurt Puchinger
PAC10 Coordinator – EUSDR

Kirchberggasse 33-35 / 9

A - 1070 Wien

Tel: +43 (0) 1 89 08 088 2201

Mobile: +43 664 883 568 58

kurt.puchinger@pa10-danube.eu



Implementing Body (IB):

Gudrun Pabst
Project Manager

EuroVienna

Kaiserstraße 113/115 – Top 8

A – 1070 Wien

Tel: +43 (0)1 89 08 088-2904

gudrun.pabst@eurovienna.a

Mira Ebner
Project Manager

EuroVienna

Kaiserstraße 113/115 – Top 8

A – 1070 Wien

Tel: +43 (0)1 89 08 088-2903

mira.ebner@eurovienna.at



With the financial support of the European Union



Decision:

- **Procedure for second START Call 2015:**
 - Publication via www.danube-navigation.eu
 - Preference for projects related to the PA1a thematic focus topics 2015-16:
 - Fairway Rehabilitation and Maintenance Master Plan
 - Administrative Processes in Danube Navigation
 - Innovative Danube Vessel

Information on Danube 2014-2020 – Danube Transnational Programme

Irina Cruceru, DG REGIO

Working Group on administrative processes

Katja Rosner, viadonau

Administrative Processes – status



- ✓ Initiative within PA 1a in cooperation with PA11 on Security
- ✓ Administrative processes and paperwork are seen as a **significant competitive disadvantage** for IWT on the Danube and its tributaries
- ✓ Background: not all Danube riparian states are in the EU; not all EU states are in the Schengen area, i.e. necessary **border checks** for passengers & crews; required **customs clearance** for imports & exports

Work Program 2014/15

- **Survey**
among shipping companies / vessel operators
at border crossings
- **Practical manual**
for border control procedures
- **Final recommendations**
on improved control procedures along the
Danube



Survey on border controls

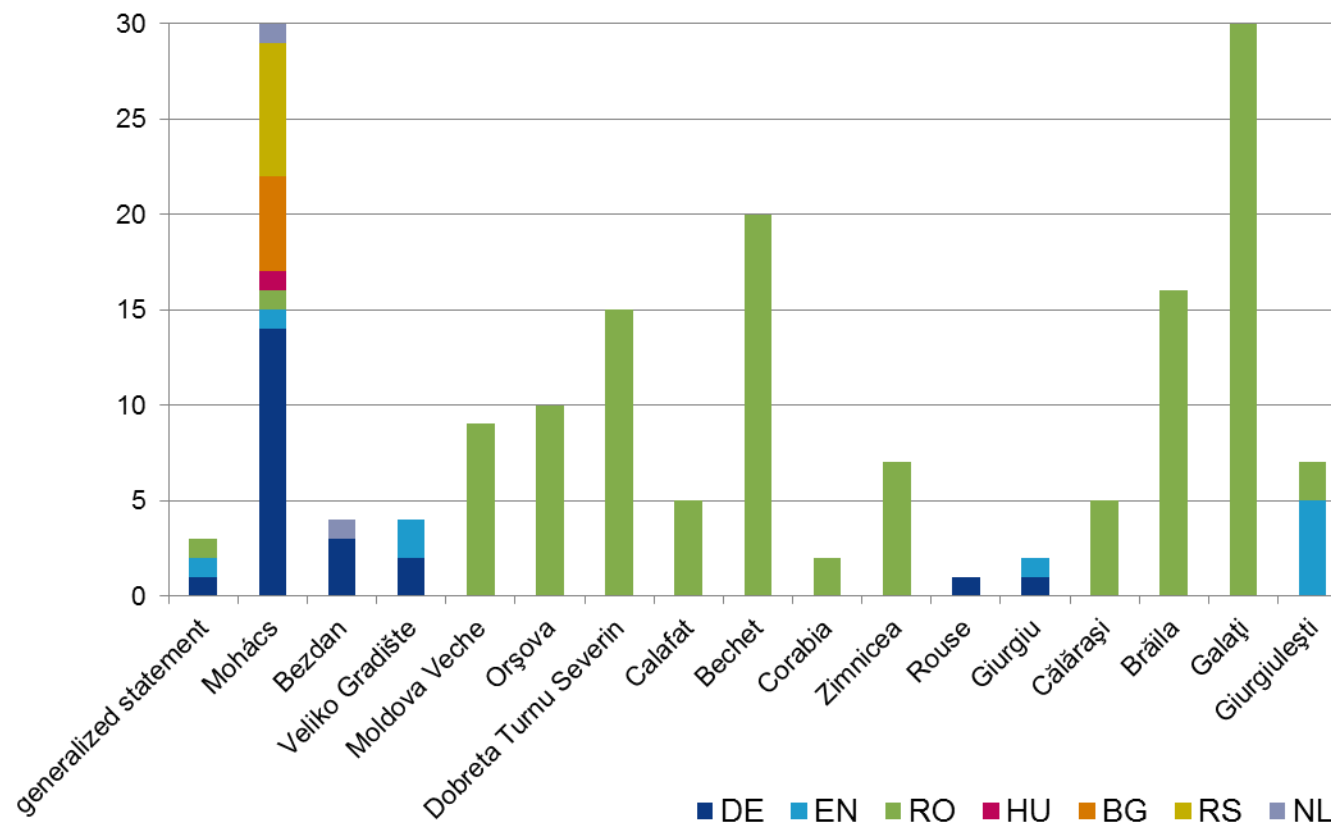
- enter discussions with solid arguments and have a mandate to initiate necessary measures
- bring results to the attention of the involved control authorities and decision-makers at the EU-level

Contents and distribution

- General information and feedback on a specific & recent control
- Online survey: www.danube-navigation.eu
- Distribution at control points



Coverage of control points in the survey

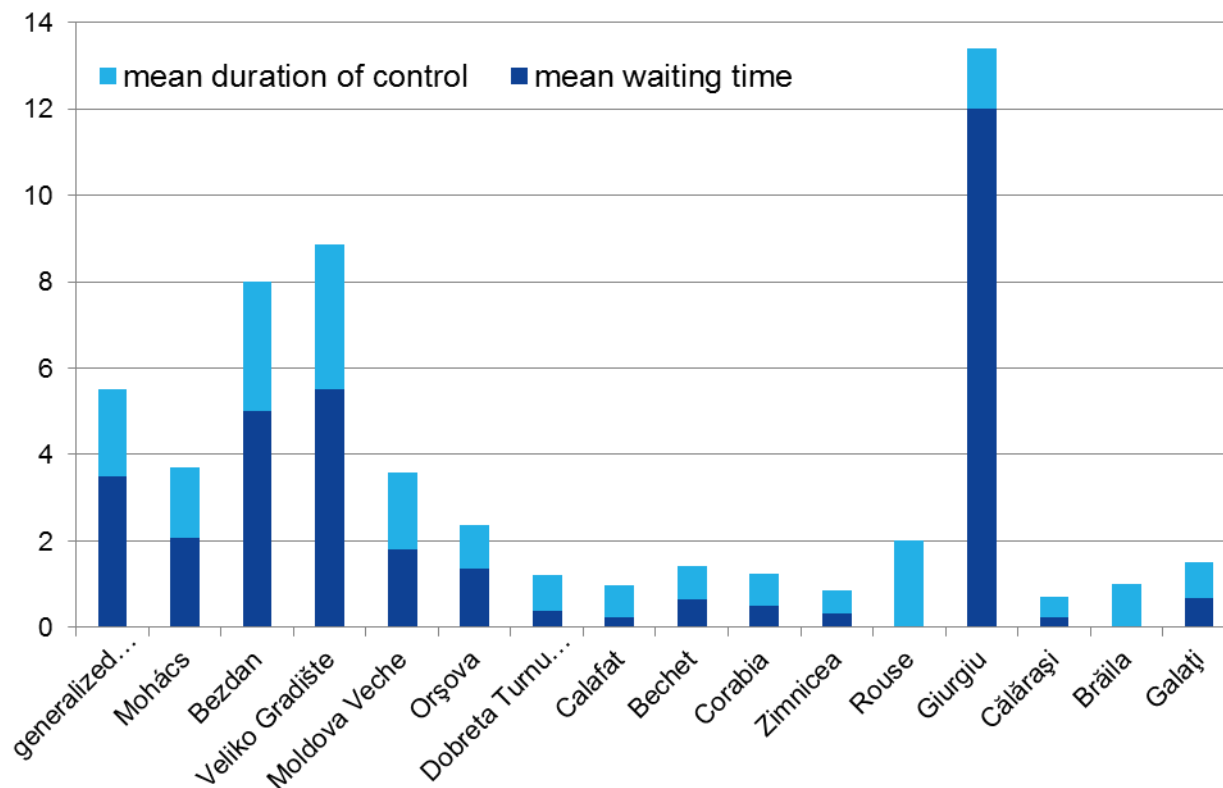


Σ 170
validly
completed
forms

28 online

142 directly
at control
points

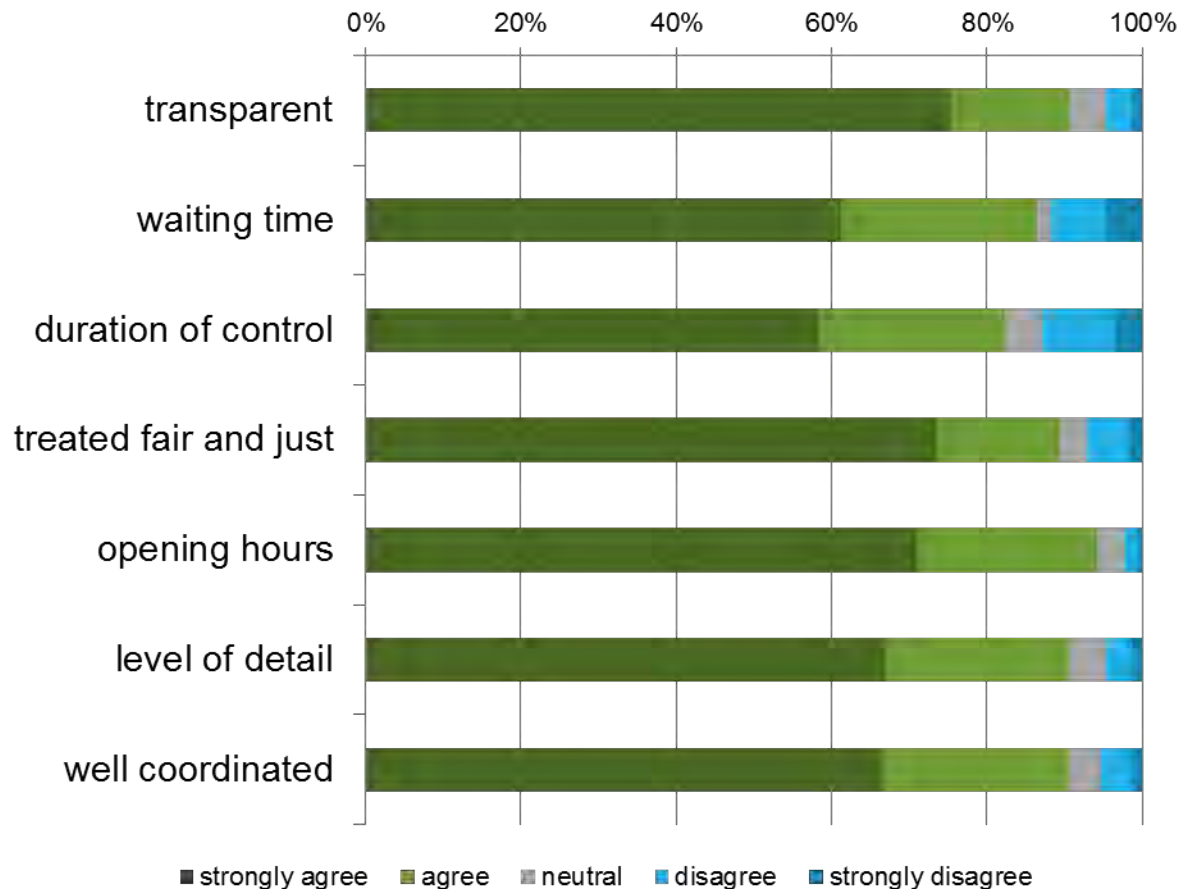
Idle time at control points



1 : 25
mean
waiting time

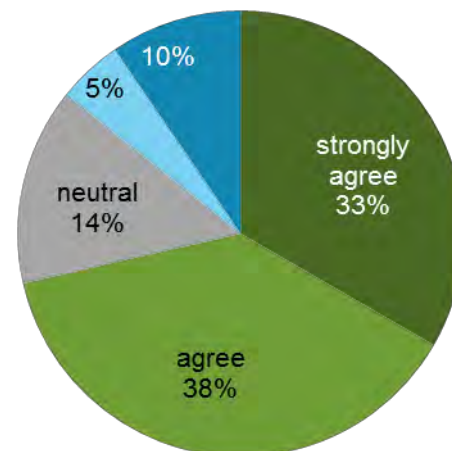
1 : 05
mean
duration of
control

Generalized feedback on the control processes

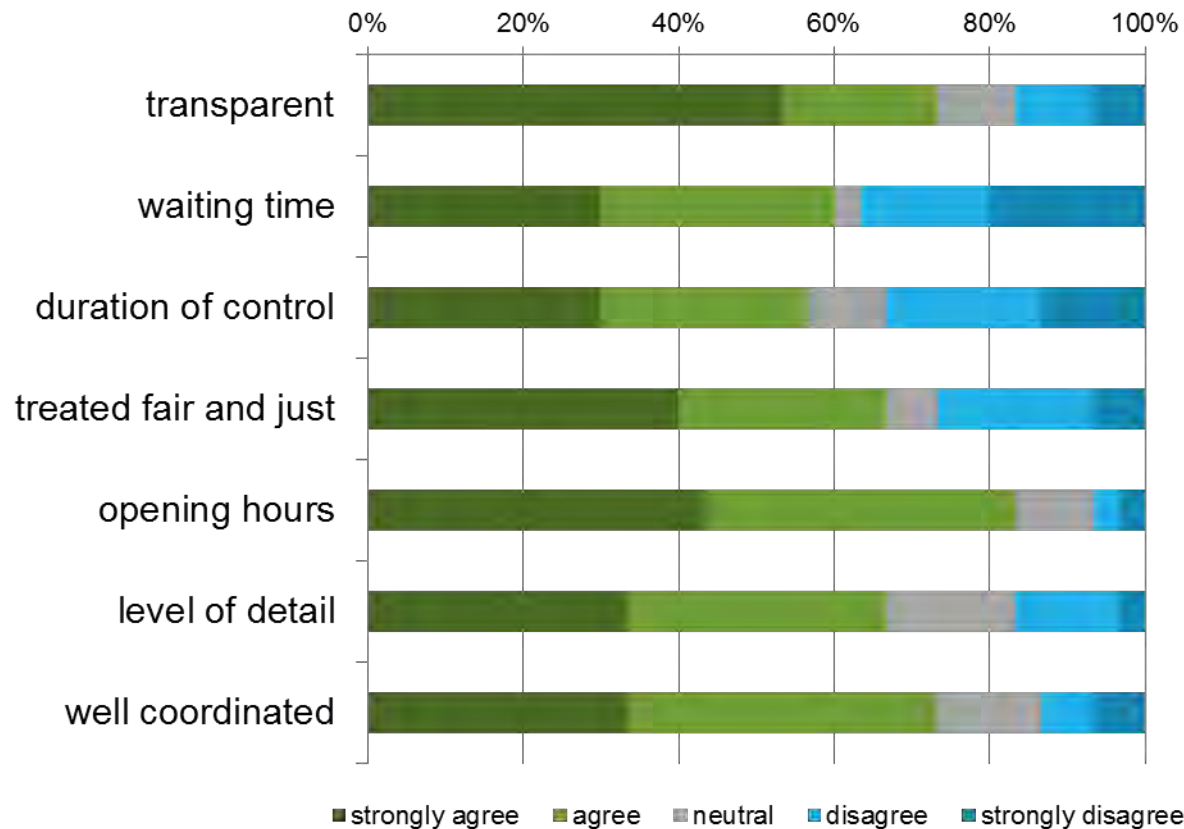


25% had to pay a fee or fine.

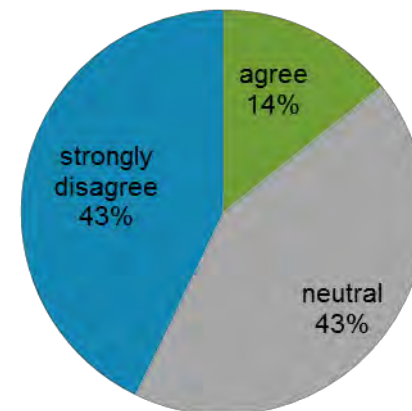
Was the payment perceived as justified?



Feedback on the control processes - Mohács



23% had to pay a fee or fine.
Was the payment perceived as justified?



Generalized feedback on the control processes

Difficulties and inconveniences

- Long waiting times
- Numerous control personnel boards the ship, at times treating the crew disrespectfully
- Payments don't always seem justified to the skippers

Suggested improvements

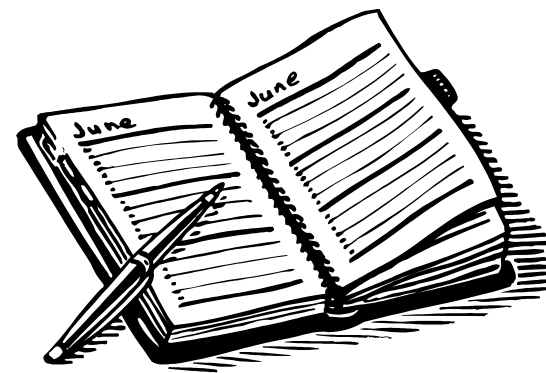
- Service oriented controls
- Enable e-submission of required data prior to the control
- Multilingual ship documents, forms and control personnel
- Less paper work and better coordination between authorities
- Opening hours: 24/7 service



Time schedule & next steps

Survey

- ✓ Online until 31.05.2015
- ✓ Distribution at control points
- Publication and dissemination of survey results



Practical Manual

- Planned for summer 2015

Final recommendations

- Planned for autumn 2015

Lunch until 13:00

Introduction

Andrea Mairate, DG REGIO

Implementation of Fairway Rehabilitation and Maintenance Master Plan

Reinhard Vorderwinkler, PAC 1a

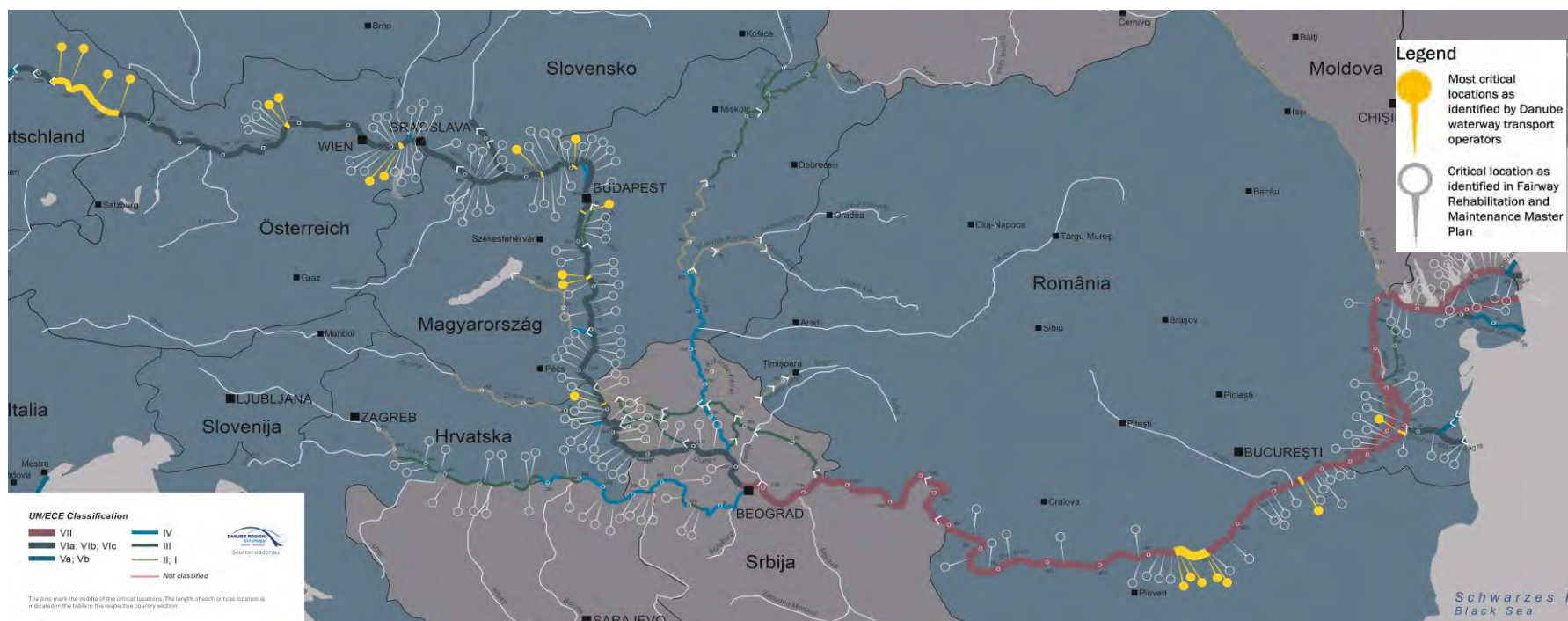
Implementation of Fairway Rehabilitation and Maintenance Master Plan

Intervention by Mr Olivier Onidi, DG MOVE

Implementation of Fairway Rehabilitation and Maintenance Master Plan

Gert-Jan Muilerman, viadonau/PA1a

11 hotspots identified by waterway users



EU Strategy for the Danube Region

Priority Area 1a – To improve mobility and multimodality: Inland waterways



Ministerial conclusions - signatories

AUSTRIA

ALOIS STÖGER

Federal Minister for Transport,
Innovation and Technology

BULGARIA

IVAYLO MOSKOSKI

Minister of Transport, Information
Technology and Communications

SLOVAKIA

FRANTIŠEK PALKO

State Secretary, Ministry of Transport,
Construction and Regional Development

CROATIA

SINIŠA HAJDAŠ DONČIĆ

Minister of Maritime Affairs,
Transport and Infrastructure

GERMANY

ALEXANDER DOBRINDT

Federal Minister of Transport
and Digital Infrastructure

BOSNIA AND HERZEGOVINA

RUDO VIDOVIĆ

Deputy Minister of Communication
and Transport

MOLDOVA

EUGEN CARAS

Ambassador, Head of Mission of
Republic of Moldova

HUNGARY

ZSOLT BECSEY

Transport Deputy State Secretary

ROMANIA

IULIAN MĂTACHE

State Secretary, Ministry of Transportation
and Infrastructure

UKRAINE

OXSANA REITER

Deputy Minister on the European
Integration, Ministry of Infrastructure

SERBIA

[Letter of consent of 10/2/2015]

Deputy Prime Minister
and
Minister

Zorana Mihajlović, Ph.D., Professor

Ministerial conclusions – need for coordinated national roadmaps

AGREE to take the necessary measures as identified and agreed by each EU Member State and riparian non-EU countries to deal within the framework of fairway maintenance with the critical fairway sections identified in the Master Plan, to establish for this purpose national roadmaps which identify individual actions, responsibilities, funding resources and intermediate milestones for the implementation of these measures and to communicate these roadmaps by 30 June 2015 to the relevant coordinating bodies;

Proposed time line towards coordinated national roadmaps:

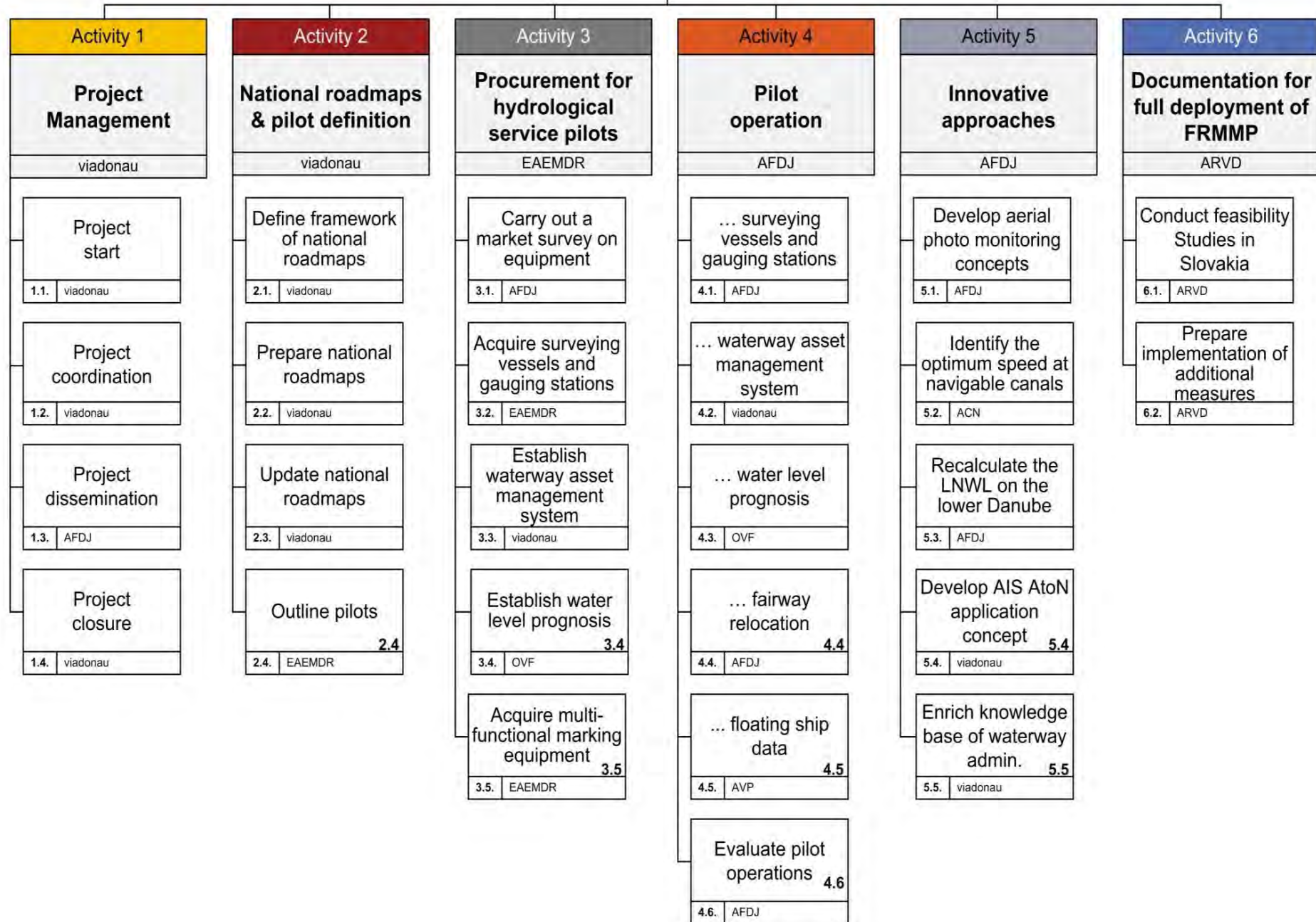
- **22nd April 2015 / PA1a Steering Group:**
 - Agreement on structure of roadmap template
 - Agreement on data provision until 15th May 2015
- **19th May 2015 / NEWADA duo Board of Directors meeting:**
 - Further discussion on provided and lacking data
 - Status update to PA1a Steering Group by e-mail
- **30th June 2015 / Final submission of roadmap document to DG MOVE / DG REGIO**
- **As of July 2015: further updates of roadmaps foreseen through proposed FAIRway project (CEF proposal)**

Outline of the proposed FAIRway project

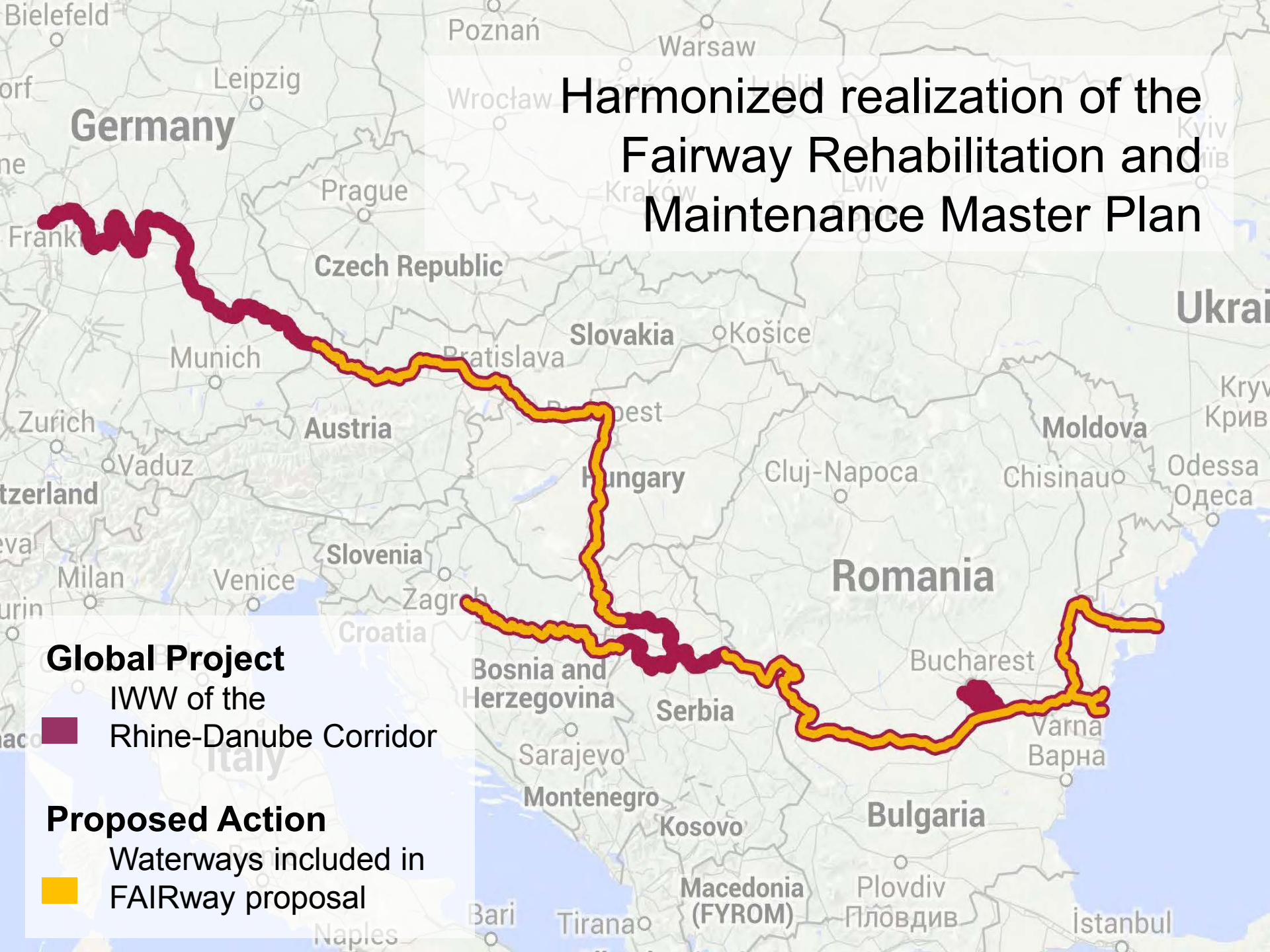
Overview of FAIRway project proposal

- **Elaborate coordinated national roadmaps and define pilots**
- **Procure equipment for hydrological services**
- **Execute and evaluate pilots**
 - Harmonized basic **data on critical locations**
 - Coherent monitoring of **navigational status**
 - Harmonized water level **prognosis**
 - Potential of **fairway relocation** and floating ship data
- **Develop innovative approaches (aerial monitoring, AtoNs ...)**
- **Prepare documentation for future implementation steps**

FAIRway



Harmonized realization of the Fairway Rehabilitation and Maintenance Master Plan



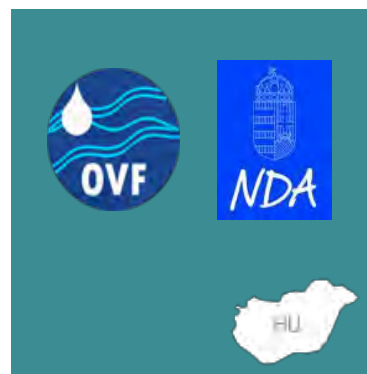
FAIRway - Proposed project Partners



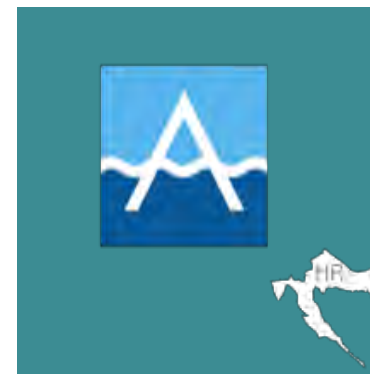
Österreichische
Wasserstraßen-
Gesellschaft



Waterborne transport
development agency



Országos Vízügyi
Főigazgatóság, Nemzeti
Infrastruktúra Fejlesztő Zrt.



Agencija za vodne putove
(AVP)



Executive Agency for
Exploration and
Maintenance of the
Danube River



River Administration of
the Lower Danube
(AFDJ)



Administration of the
Navigable Canals (ACN)

+ FAIRway
Advisory
Board

+ FAIRway
User Forum

FAIRway Advisory Board and User Forum

FAB – FAIRway Advisory Board

Reflects inputs and trends relevant for the implementation of the project.



FUF – FAIRway User Forum

Discusses requirements to waterway infrastructure and planned activities. Annual national and transnational forums.



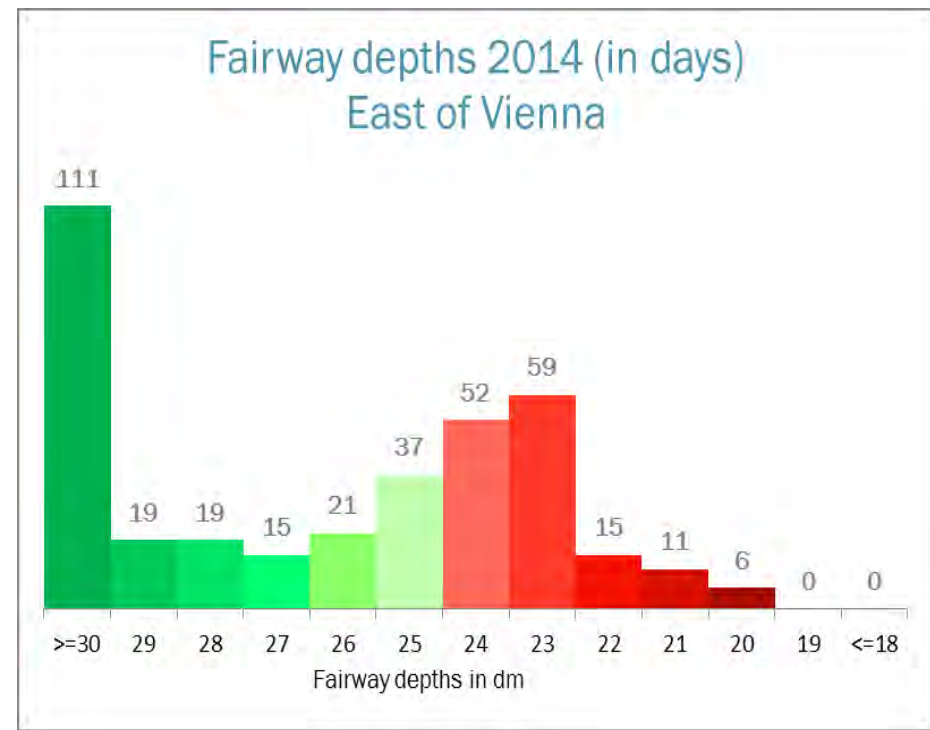
FAIRway – time plan

26/02/2015	Proposal submitted
03–04/2015	Evaluation of proposals
06/2015	Consultation of Financial Assistance Committee; Scrutiny right of European Parliament
as from 09/2015	Possible signing of grant agreements

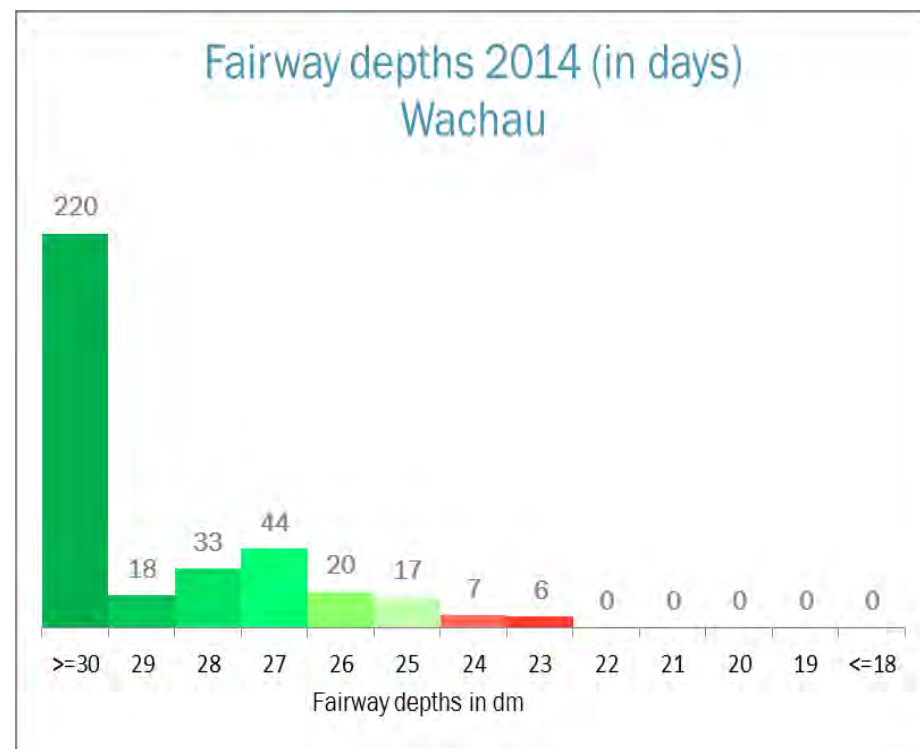
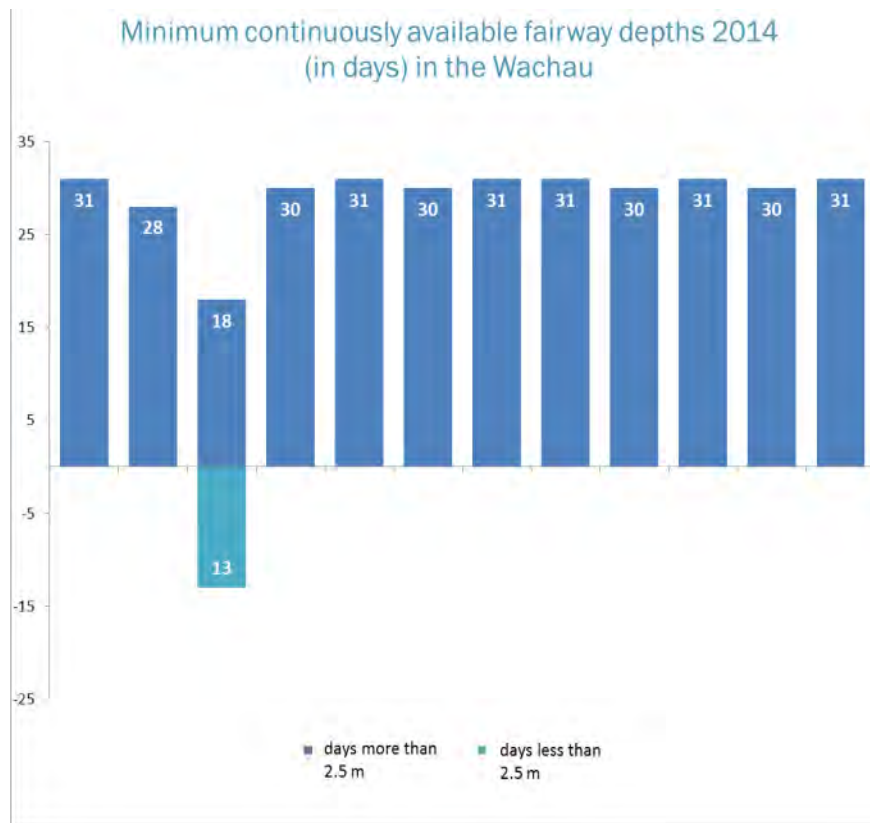
Proposed structure and contents of national roadmaps

Status report on main critical locations (2014)

- Number of days with fairway depths $>2,50$ m on main critical locations

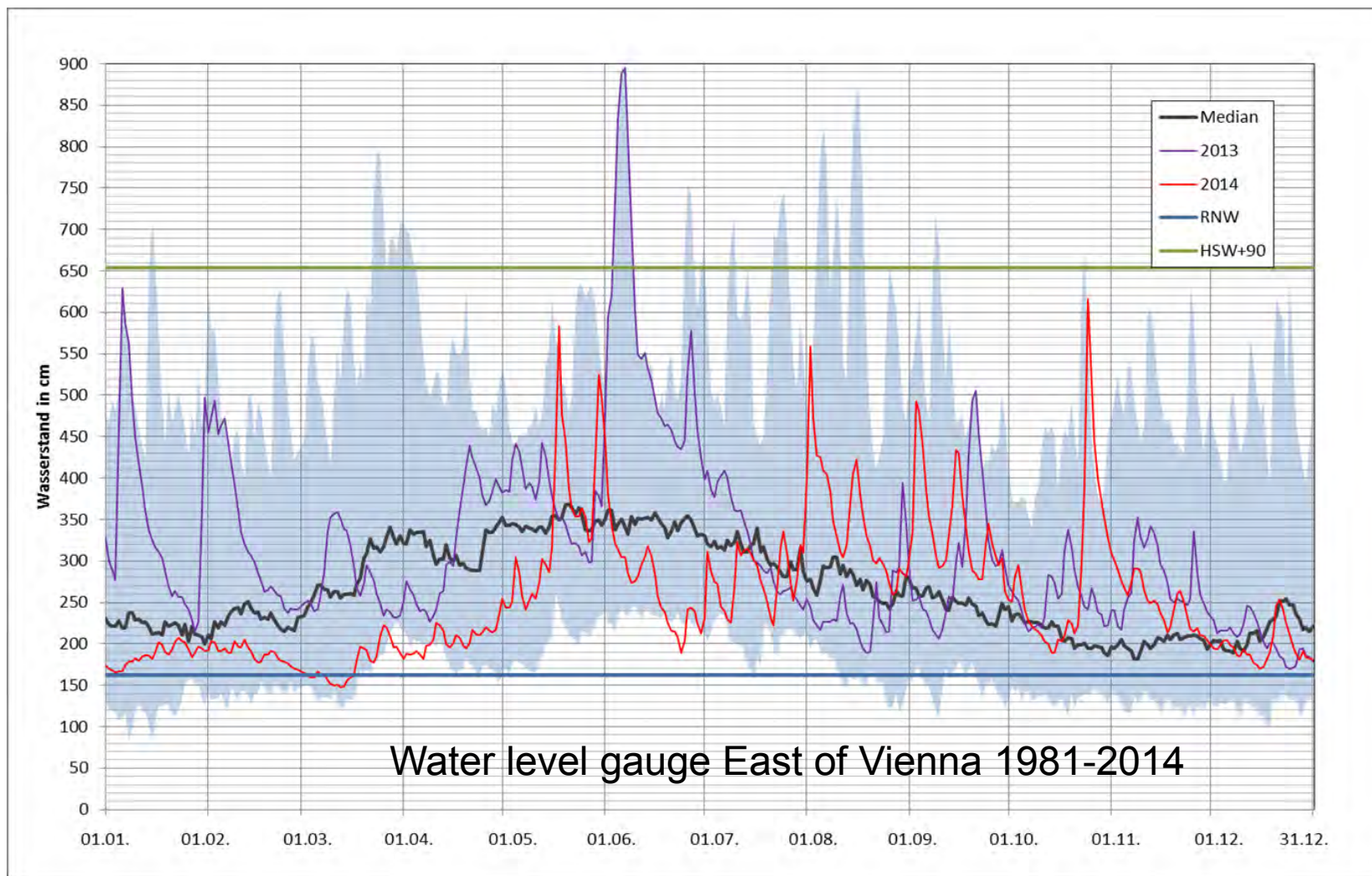


- Number of days with fairway depths $>2,50$ m on main critical locations



EU Strategy for the Danube Region

Priority Area 1a – To improve mobility and multimodality: Inland waterways



– Surveying activities 2014

Date	KM-fm	Km-l	Area	Type	m ²	Method
24.03.2014	1891,9	1893,3	Petronell	Ford	365.517	Multibeam
21.05.2014	1891,8	1893,3	Petronell	Ford	425.088	Multibeam
23.06.2014	1891,9	1893,2	Petronell	Ford	265.000	Multibeam
19.08.2014	1891,8	1893,2	Petronell	Ford	421.747	Multibeam
22.10.2014	1891,8	1893,1	Petronell	Ford	216.459	Multibeam
12.11.2014	1891,8	1893,3	Petronell	Ford	305.058	Multibeam
15.12.2014	1891,6	1893,5	Petronell	Ford	264.638	Multibeam
26.06.2014	1906,5	1907,2	Pfarrgraben	Lateral sedimentation	176.361	Singlebeam
22.01.2014	1897,7	1899,1	Regelsbrunn	Ford	302.069	Multibeam
10.03.2014	1897,6	1898,8	Regelsbrunn	Ford	302.588	Singlebeam
19.03.2014	1897,6	1898,8	Regelsbrunn	Ford	309.852	Multibeam
26.03.2014	1897,6	1898,8	Regelsbrunn	Ford	330.795	Multibeam
31.03.2014	1897,6	1898,8	Regelsbrunn	Ford	291.420	Multibeam
14.04.2014	1897,3	1898,8	Regelsbrunn	Ford	374.576	Multibeam
28.04.2014	1897,6	1898,8	Regelsbrunn	Ford	319.685	Multibeam
25.06.2014	1898,0	1898,8	Regelsbrunn	Ford	234.497	Multibeam
08.07.2014	1890,1	1891,2	Rübenhaufen	Lateral sedimentation	282.000	Multibeam
11.08.2014	1890,4	1891,0	Rübenhaufen	Lateral sedimentation	175.228	Multibeam
02.10.2014	1890,4	1891,0	Rübenhaufen	Lateral sedimentation	121.271	Multibeam
06.10.2014	1890,4	1891,0	Rübenhaufen	Lateral sedimentation	71.773	Multibeam
07.07.2014	1881,0	1881,8	Röthelstein	Lateral sedimentation	178.729	Multibeam
07.07.2014	1882,4	1883,5	Röthelstein	Lateral sedimentation	270.194	Multibeam
20.11.2014	1882,5	1883,0	Röthelstein	Lateral sedimentation	108.563	Multibeam
21.01.2014	1895,7	1896,7	Rote Werd	Ford	255.458	Multibeam

– Fairway relocation activities 2014

River-km (from-to)	Frequency of relocation interventions	Comments
		e.g. relocation due to insufficient resources for dredging, emergency situation ..

– Dredging activities 2014

Designation of assignment	Dredging site		Dumping or placement site		Beginning of service	End of service	Material	Utilisation	m ³
	from river-km	to river-km	from river-km	to river-km					
Schlögener Schlinge	2.186,50	2.186,20	2.181,90	2.181,30	22.05.2014	05.06.2014	Fine sediment	Dumping	11.508,00
Inzeller Scheibe - Kleinmaßnahme	2.185,00	2.184,80	2.181,90	2.181,30	02.06.2014	03.06.2014	Fine sediment	Dumping	3.200,00
Ennshafen - Restarbeiten FS	2.112,00	2.112,00	2.111,80	2.111,00	17.10.2014	27.11.2014	Fine sediment	Dumping	33.280,20
Ennshafen - Restarbeiten Kies	2.112,00	2.112,00	2.115,00	2.115,00	06.10.2014	16.10.2014	Gravel	Dumping	10.191,24
Hochau/Dornach, Hößgang/Struden	2.085,70	2.077,40	2.088,40	2.085,10	04.02.2014	24.03.2014	Gravel	Dumping	71.074,66
Haufenrand Aggsbach	2.027,80	2.027,50	2.029,10	2.028,50	10.11.2014	27.11.2014	Gravel	Bank structuring	1.965,16
Furt Hinterhaus	2.020,10	2.019,40	2.029,10	2.028,50	10.11.2014	20.11.2014	Gravel	Bank structuring	20.392,93
Furt Hofarnsdorf	2.019,40	2.018,60	2.029,75	2.028,50	01.04.2014	28.04.2014	Gravel	Bank structuring	23.529,78
Furt Weißenkirchen	2.014,60	2.013,50	2.023,40	2022,80	06.11.2013	05.02.2014	Gravel	Bank structuring	89.730,79
Haufenrand Dürnstein	2.010,30	2.009,20	2.029,10	2.028,50	10.09.2014	29.09.2014	Gravel	Bank structuring	21.139,65
Furt Rothenhof	2.005,90	2.005,00	2.023,20	2.022,80	13.10.2014	28.10.2014	Gravel	Bank structuring	20.472,00
Lände Hollenburg	1.993,90	1.993,60	1.993,50	1.993,10	11.02.2014	12.02.2014	Fine sediment	Dumping	1.647,80
Ölhafen Theiss	1.993,50	1.993,10	1.993,00	1.992,50	13.02.2014	26.02.2014	Fine sediment	Dumping	7.572,50
Havarieabsetzplatz Wien	1.930,31	1.930,16	1.931,00	1.930,50	03.12.2014	04.12.2014	Fine sediment	Dumping	864,26
Hafeneinfahrt Albern	1.918,40	1.918,10	1.914,90	1.914,00	24.11.2014	26.11.2014	Gravel	Dumping	3.706,57
Hafeneinfahrt Lobau	1.917,30	1.916,25	1.913,40	1.912,80	04.11.2014	18.11.2014	Gravel	Dumping	20.022,78
Hafen Lobau	1.917,30	1.916,30	1.914,90	1.912,80	23.01.2014	19.02.2014	Gravel	Dumping	16.977,00
Furt Regelsbrunn	1.898,30	1.897,90	1.898,60	1.897,80	03.03.2014	11.04.2014	Gravel	Dumping	29.645,30
Furt Rote Werd	1.896,65	1.895,75	1.901,80	1.900,80	26.02.2014	15.04.2014	Gravel	Dumping	30.542,00
Furt Rote Werd	1.896,45	1.895,95	1.901,80	1.900,80	08.09.2014	26.09.2014	Gravel	Dumping	30.542,59
Furt Treuschütt	1.888,40	1.887,70	1.891,00	1.890,40	27.08.2014	05.10.2014	Gravel	Dumping	44.434,95
Furt Bad Deutsch-Altenburg	1.886,90	1.886,10	1.889,90	1.889,00	06.10.2014	09.12.2015	Gravel	Dumping	41.258,29
Haufenrand Hainburg	1.884,50	1.884,00	1.884,00	1.883,50	22.04.2014	09.05.2014	Gravel	Dumping	12.942,58
Furt Käsmacher	1.875,74	1.875,27	1.884,00	1.883,50	01.12.2014	15.12.2014	Gravel	Dumping	20.001,59

Surveying – Fairway Relocation – Dredging: Costs 2014

Cost type	Costs (EUR)
Surveying costs	447.098
Fairway relocation costs	0
Dredging costs	7.343.378
Total	7.790.476

Template for national roadmaps

Outlook: planned actions, milestones and funding sources

<i>AT 01: Water level measurements during extreme weather events</i>		
Planned activities:	Ensuring automatic water level measurements, validity checks and real-time data transfer throughout extreme weather events and providing these data to management systems	
Current shortcomings:	Currently, there are no shortcomings identified	
Possible funding:	National budget/company budget; possibly CEF call	
Next steps:	Reach state of the art in real-time data transfer, integration of real-time data into management systems, automatic validity checks with cameras	until 31.12.2015

Tour de table on national roadmaps

- *Your opinion on structure of template*
- *Expected data availability by 15th May 2015*

Conclusions and next steps

Decisions and conclusions:

- **Focus topics for PA1a workplan 2015-2016:**
 - Fairway Rehabilitation and Maintenance Master Plan
 - Working Group on Administrative Processes
 - Innovative Danube Vessel
- **Procedure for second START Call 2015:**
 - Publication via www.danube-navigation.eu
 - Preference for projects related to the PA1a focus topics 2015-16
- **Pro Danube International as permanent member of PA1a Steering Group**

Decisions and conclusions:

■ Procedure on finalisation of roadmaps

- Agreement on structure of roadmap template today
- Agreement on data provision until 15th May 2015
- Final submission of roadmap document by PA1a to DG MOVE / DG REGIO on 30th June 2015
- As of July 2015: further updates of roadmaps foreseen through proposed FAIRway project (CEF proposal)

PA 1a coordinators



Austria



= Coordinator



= Technical
Secretariat

Reinhard Vorderwinkler

reinhard.vorderwinkler@bmvit.gv.at

Gert-Jan Muilerman

gert-jan.muilerman@viadonau.org

Gudrun Maierbrugger

gudrun.maierbrugger@viadonau.org



Romania



Ministerul Transporturilor

= Coordinator & Technical
Secretariat

Cristina Cuc

cristina.cuc@mt.ro