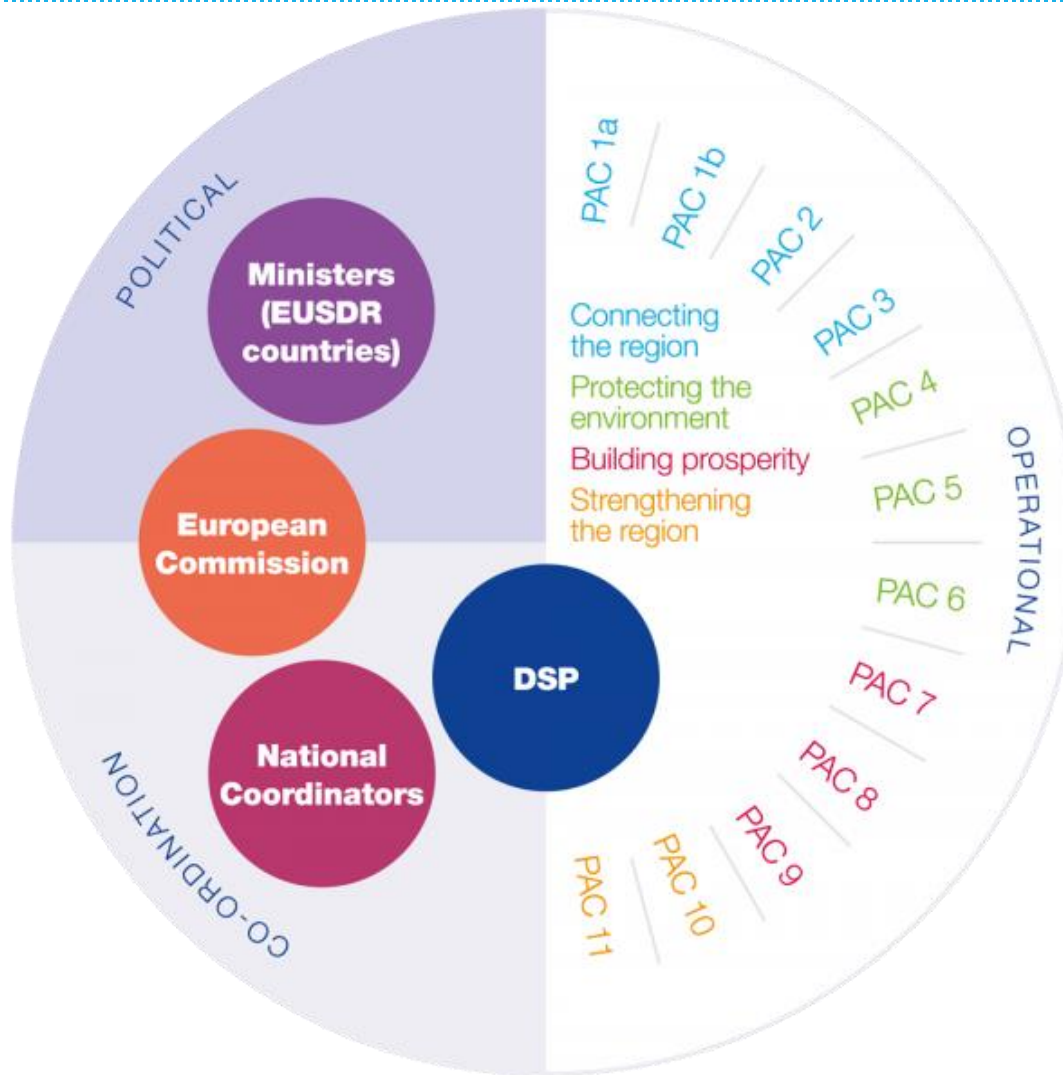


Priority Area 1a of the Danube Region Strategy on Inland Waterways



Overall governance structure



Priority Area Coordinators

- PA 1A | **Mobility | Waterways** coordinated by **Austria/Romania**
- PA 1B | **Mobility | Rail-Road-Air** coordinated by Slovenia/Serbia
- PA 02 | **Energy** coordinated by Hungary/Czech Republic
- PA 03 | **Culture & Tourism** coordinated by Bulgaria/Romania
- PA 04 | **Water Quality** coordinated by Hungary/Slovakia
- PA 05 | **Environmental Risks** coordinated by Hungary/Romania
- PA 06 | **Biodiversity** coordinated by Bavaria/Croatia
- PA 07 | **Knowledge Society** coordinated by Slovakia/Serbia
- PA 08 | **Competitiveness** coordinated by Baden-Württemberg/Croatia
- PA 09 | **People & Skills** coordinated by Austria (bmbf+Sozialministerium)/Moldova
- PA 10 | **Institutional capacity cooperation** coordinated by City of Vienna/Slovenia
- PA 11 | **Security** coordinated by Germany/Bulgaria.

PA 1a coordinators



Austria



= Coordinator

viadonau

= Technical
Secretariat

Ursula Zechner

ursula.zechner@bmvit.gv.at

Gert-Jan Muilerman

gert-jan.muilerman@viadonau.org

Gudrun Maierbrugger

gudrun.maierbrugger@viadonau.org



Romania



Ministerul Transporturilor

= Coordinator & Technical
Secretariat

Marius Humelnicu

cabinet.humelnicu@mt.ro

Cristina Cuc

cristina.cuc@mt.ro

Monica Patrichi

monica.patrichi@mt.ro

PA1a targets

- (1) Increase the cargo transport on the river by 20% by 2020 compared to 2010.
- (2) Solve obstacles to navigability, taking into account the specific characteristics of each section of the Danube and its navigable tributaries and establish effective waterway infrastructure management by 2020.
- (3) Develop efficient multimodal terminals at river ports along the Danube and its navigable tributaries to connect inland waterways with rail and road transport by 2020.
- (4) Implement harmonised River Information Services (RIS) on the Danube and its navigable tributaries and ensure the international exchange of RIS data preferably by 2020.
- (5) Solve the shortage of qualified personnel and harmonize education standards in inland navigation in the Danube region by 2020, taking duly into account the social dimension of the respective measures.

PA1a thematic priorities 2015/2016

PA1a priorities 2015-2016

- **Comprehensive waterway maintenance:** Provide the basis for more stable and less variable water levels on the Danube and its navigable tributaries through comprehensive waterway management
 - Target: Support the achievements of the objectives of the Fairway Rehabilitation and Maintenance Plan for the Danube and its navigable tributaries – as endorsed by the Danube transport ministers on 3rd December 2014.

- **Administrative barriers:** Reduce the administrative burden on commercial shipping companies
 - Targets: Reduce waiting times and administrative costs through recommendations for improved border control procedures in the Danube Region.

- **Fleet modernisation:** Develop concepts for more efficient and environmentally-friendly inland vessels
 - Target: Support the roll-out of greening technologies for inland waterway vessels in the Danube Region.